

 **BOEING**
COMPONENT
MAINTENANCE MANUAL

TO: ALL HOLDERS OF NO. 3 AFT FAIRING ASSEMBLY COMPONENT MAINTENANCE
MANUAL 57-26-12

REVISION NO. 2 DATED JUL 01/04

HIGHLIGHTS

Pages which have been added or revised are outlined below together with the highlights of the revision. Remove and insert the affected pages as listed and enter Revision No. and date on the Record of Revision Sheet.

CHAPTER/SECTION

AND PAGE NO.

DESCRIPTION OF CHANGE

TITLE PAGE

Added Top Assembly part numbers 113T1770-49SP, -50SP, -51SP, -52SP to reflect the latest engineering drawing.

1

TR & SB RECORD

1

401

501

REPAIR 2-1

601

REPAIR 3-1

601-602

702-704,707

1003-1016,1021-1041

1001-1002

Edited without technical change.

57-26-12

HIGHLIGHTS

01.1

Page 1

Jul 01/04

INBOARD TRAILING EDGE FLAP
NO. 3 AFT FAIRING ASSEMBLY

PART NUMBERS 113T1770-25SP,-26SP,-27,-28,
-31SP,-32SP,-35,-36,
-39 THRU -48,
-49SP THRU -52SP

COMPONENT MAINTENANCE MANUAL
WITH
ILLUSTRATED PARTS LIST

57-26-12

TITLE PAGE

Page 1

Jul 01/04

01.1



REVISION RECORD

- Retain this record in front of manual. On receipt of revision, insert revised pages in the manual, and enter revision number, date inserted and initial.

REVISION NUMBER	REVISION DATE	DATE FILED	BY	REVISION NUMBER	REVISION DATE	DATE FILED	BY


BOEING
 COMPONENT
 MAINTENANCE MANUAL
TEMPORARY REVISION AND SERVICE BULLETIN RECORD

BOEING SERVICE BULLETIN	BOEING TEMPORARY REVISION	OTHER DIRECTIVE	DATE OF INCORPORATION INTO MANUAL
767-57-0014R2		PRR B11310 PRR B11382 PRR B13394	JUL 10/86 JUL 10/86 APR 01/92 JUL 01/04

57-26-12

TR & SB RECORD

01.1

Page 1

Jul 01/04


BOEING
 COMPONENT
 MAINTENANCE MANUAL

PAGE	DATE	CODE	PAGE	DATE	CODE
57-26-12			REPAIR-GENERAL		
			601	JUL 10/86	01
			602	JUL 10/86	01
TITLE PAGE			603	JUL 10/86	01
*1	JUL 01/04	01.1	604	BLANK	
2	BLANK		REPAIR 1-1		
REVISION RECORD			601	APR 01/92	01.1
1	JUL 10/86	01	602	BLANK	
2	BLANK		REPAIR 2-1		
TR & SB RECORD			*601	JUL 01/04	01.1
*1	JUL 01/04	01.1	602	BLANK	
2	BLANK		REPAIR 3-1		
LIST OF EFFECTIVE PAGES			*601	JUL 01/04	01.101
*1	JUL 01/04	01	*602	JUL 01/04	01.1
THRU LAST PAGE			ASSEMBLY		
CONTENTS			701	APR 01/92	01.1
1	APR 01/92	01.1	*702	JUL 01/04	01.1
2	BLANK		*703	JUL 01/04	01.1
INTRODUCTION			*704	JUL 01/04	01.1
1	JUL 10/86	01	705	APR 01/92	01.1
2	BLANK		706	JUL 10/86	01
DESCRIPTION & OPERATION			*707	JUL 01/04	01.1
1	JUL 10/86	01	708	BLANK	
2	BLANK		ILLUSTRATED PARTS LIST		
DISASSEMBLY			*1001	JUL 01/04	01.1
301	JUL 10/86	01	*1002	JUL 01/04	01.1
302	BLANK		*1003	JUL 01/04	01.1
CLEANING			*1004	JUL 01/04	01.1
*401	JUL 01/04	01.1	*1005	JUL 01/04	01.1
402	BLANK		*1006	JUL 01/04	01.1
CHECK			*1007	JUL 01/04	01.1
*501	JUL 01/04	01.1	*1008	JUL 01/04	01.1
502	BLANK		*1009	JUL 01/04	01.1
			*1010	JUL 01/04	01.1
			*1011	JUL 01/04	01.1
			*1012	JUL 01/04	01.1
			*1013	JUL 01/04	01.1
			*1014	JUL 01/04	01.1

* = REVISED, ADDED OR DELETED

57-26-12

 EFFECTIVE PAGES
 CONTINUED Page 1
 01 Jul 01/04

PAGE	DATE	CODE	PAGE	DATE	CODE
ILLUSTRATED PARTS LIST		CONT.			
*1015	JUL 01/04	01.1			
*1016	JUL 01/04	01.1			
*1017	JUL 01/04	01.1			
*1018	JUL 01/04	01.1			
*1019	JUL 01/04	01.1			
*1020	JUL 01/04	01.1			
*1021	JUL 01/04	01.1			
*1022	JUL 01/04	01.1			
*1023	JUL 01/04	01.1			
*1024	JUL 01/04	01.1			
*1025	JUL 01/04	01.1			
*1026	JUL 01/04	01.1			
*1027	JUL 01/04	01.1			
*1028	JUL 01/04	01.1			
*1029	JUL 01/04	01.1			
*1030	JUL 01/04	01.1			
*1031	JUL 01/04	01.1			
*1032	JUL 01/04	01.1			
*1033	JUL 01/04	01.1			
*1034	JUL 01/04	01.1			
*1035	JUL 01/04	01.1			
*1036	JUL 01/04	01.1			
*1037	JUL 01/04	01.1			
*1038	JUL 01/04	01.1			
*1039	JUL 01/04	01.1			
*1040	JUL 01/04	01.1			
*1041	JUL 01/04	01.1			
*1042	BLANK				

* = REVISED, ADDED OR DELETED

57-26-12

EFFECTIVE PAGES
 LAST PAGE Page 2
 01 Jul 01/04



TABLE OF CONTENTS

<u>Paragraph Title</u>	<u>Page</u>
Description and Operation	1
Testing and Trouble Shooting (not applicable)	
Disassembly	301
Cleaning.	401
Check	501
Repair.	601
Assembly.	701
Fits and Clearances (not applicable)	
Special Tools (not applicable)	
Illustrated Parts List.	1001

*[1] Special instructions not required. Use standard industry practices.

57-26-12

CONTENTS
Page 1
Apr 01/92

01.1



INTRODUCTION

The instructions in this manual provide the information necessary to perform maintenance functions ranging from simple checks and replacement to complete shop-type repair.

This manual is divided into separate sections:

- | | |
|--|------------------------------|
| 1. Title Page | 4. List of Effective Pages |
| 2. Record of Revisions | 5. Table of Contents |
| 3. Temporary Revision &
Service Bulletin Record | 6. Introduction |
| | 7. Procedures & IPL Sections |

Refer to the Table of Contents for the page location of applicable sections.

The beginning of the REPAIR section includes a list of the separate repairs, a list of applicable standard Boeing practices, and an explanation of the True Position Dimensioning symbols used.

An explanation of the use of the Illustrated Parts List is provided in the Introduction to that section.

All weights and measurements used in the manual are in English units, unless otherwise stated. When metric equivalents are given they will be in parentheses following the English units.

Design changes, optional parts, configuration differences and Service Bulletin modifications create alternate part numbers. These are identified in the Illustrated Parts List (IPL) by adding an alphabetical character to the basic item number. The resulting item number is called an alpha-variant. Throughout the manual, IPL basic item number references also apply to alpha-variants unless otherwise indicated.

57-26-12

INTRODUCTION

01

Page 1

Jul 10/86



NO. 3 AFT FAIRING ASSEMBLY

DESCRIPTION AND OPERATION

1. Description and Operation

The No. 3 aft fairing assembly is a fiberglass or aramid and graphite/epoxy/honeycomb sandwich shell with aluminum support frames. When the fairing is installed on the airplane it provides for smooth airflow around the flap tracks.

2. Leading Particulars (Approximate)

Length -- 48 inches
Width -- 17 inches
Hieght -- 17 inches
Weight -- 16 pounds

57-26-12

DESCRIPTION & OPERATION

01

Page 1

Jul 10/86



DISASSEMBLY

1. Use standard industry practices for disassembly of this component.

NOTE: Disassemble this component only as necessary to complete fault isolation, determine the serviceability of parts, perform required repairs and restore the unit to serviceable condition.

57-26-12

DISASSEMBLY

01

Page 301

Jul 10/86



BOEING
COMPONENT
MAINTENANCE MANUAL

CLEANING

CAUTION: DO NOT VAPOR DEGREASE ARAMID/GRAPHITE EPOXY STRUCTURES OR FIBERGLASS EPOXY STRUCTURES WITH CHLORINATED CLEANING AGENTS SUCH AS METHYLENE CHLORIDE, TRICHLOROETHYLENE, AND TRICHLOROETHANE. CHLORINATED CLEANING AGENTS WILL CAUSE DAMAGE TO ARAMID/GRAPHITE EPOXY STRUCTURES OR FIBERGLASS EPOXY STRUCTURES.

CAUTION: 1, 1, 1 - TRICHLOROETHANE IS ONE OF THE SOLVENTS ALLOWED FOR CLEANING COMPOSITE COMPONENTS. DO NOT SUBMERGE PARTS IN THE SOLVENT OR ALLOW STANDING SOLVENT ON THE PARTS OR DAMAGE MAY OCCUR. USE 1, 1, 1 - TRICHLOROETHANE ONLY AS A WIPE SOLVENT.

1. Clean all parts in accordance with standard industry practices (Ref 20-30-03) except for the following:

- A. Upper and lower bonded assemblies (390, 405, IPL Fig. 1).
- B. Clean teflon lined-bearing (135, 220) per 20-30-01.

57-26-12

CLEANING
Page 401
Jul 01/04

01.1



CHECK

1. Check all parts for obvious defects in accordance with standard industry practices.
2. Penetrant check the following parts per 20-20-02 -- Fwd and aft Frames (140, 267, 270, 370, 372, IPL Fig. 1), corner doubler (277).
3. Check bonded assemblies (390, 405) for evidence of delamination, internal water, scratches and contour defects.
 - A. Examine for delamination ultrasonically.
 - B. Examine areas suspected of containing water radiographically to determine extent of damage.
 - C. Examine edges of panel carefully for cuts and abrasions. Delamination starts very easily from damage to an exposed edge of honeycomb panel.
4. Refer to 767 structural repair manual 57-53-70 and 57-53-71 for allowable damage data.

57-26-12

CHECK

01.1

Page 501

Jul 01/04

REPAIR – GENERAL1. Contents

- A. Repair, refinish, and replacement procedures are included in separate repair sections as follows:

<u>P/N</u>	<u>NAME</u>	<u>REPAIR</u>
113T1772 113T1786	FWD FRAME ASSEMBLY	1-1
113T1774	AFT FRAME ASSEMBLY	2-1
-----	MISC. PARTS REFINISH	3-1

2. Standard Practices

3. Refer to the following standard practices, as applicable, for details of procedures in individual repairs.

20-30-02 Stripping of Protective Finishes
 20-30-03 General Cleaning Procedures
 20-41-01 Decoding Table for Boeing Finish Codes
 20-41-02 Application of Chemical and Solvent Resistant Finishes
 20-43-01 Chromic Acid Anodizing
 20-43-03 Alodizing
 20-50-03 Bearing Installation and Retention

4. Materials

NOTE: Equivalent substitutes may be used.

- A. Chemical film (ref 20-60-02)
- B. Coating, conductive -- BMS 10-21, type 1 (ref 20-60-02)
- C. Conditioner, static -- Dexter 28-C-1 (ref 20-60-02)
- D. Enamel -- BMS 10-11, type 2, BAC707 gray gloss (ref 20-60-02)
 BMS 10-60, type 1, BAC707 gray gloss (ref 20-60-02)
 BMS 10-60, type 2, color per operators color scheme (ref 20-60-02)
- E. Primer -- BMS 10-11, type 1 (ref 20-60-02)
 BMS 10-79, type 2 (ref 20-60-02)

57-26-12

REPAIR-GENERAL

01

Page 601

Jul 10/86

- F. Sealant -- BMS 5-95 (ref 20-60-04)
- G. Surfacer -- Dexter 8-W-5 (ref 20-60-02)
Epocast 156 (ref 20-60-02)

57-26-12

REPAIR-GENERAL

01

Page 602

Jul 10/86

4. Dimensioning Symbols

A. Standard True Position Dimensioning Symbols used in applicable repair procedures are shown in Fig. 601.

—	STRAIGHTNESS	\oplus	THEORETICAL EXACT POSITION OF A FEATURE (TRUE POSITION)
\square	FLATNESS	\varnothing	DIAMETER
\perp	PERPENDICULARITY (OR SQUARENESS)	BASIC (BSC) OR	A THEORETICALLY EXACT DIMENSION USED TO DESCRIBE SIZE, SHAPE OR LOCATION OF A FEATURE FROM WHICH PERMISSIBLE VARIATIONS ARE ESTABLISHED BY TOLERANCES ON OTHER DIMENSIONS OR NOTES.
//	PARALLELISM	DIM	
\bigcirc	ROUNDNESS	-A-	DATUM
\bigcirc	CYLINDRICITY	\textcircled{M}	MAXIMUM MATERIAL CONDITION (MMC)
\frown	PROFILE OF A LINE	\textcircled{S}	REGARDLESS OF FEATURE SIZE (RFS)
\triangle	PROFILE OF A SURFACE	\textcircled{P}	PROJECTED TOLERANCE ZONE
\odot	CONCENTRICITY	FIM	FULL INDICATOR MOVEMENT
\equiv	SYMMETRY		
\sphericalangle	ANGULARITY		
\nearrow	RUNOUT		

EXAMPLES

$\boxed{\text{—} \quad 0.002}$	STRAIGHT WITHIN 0.002	$\boxed{\textcircled{\text{C}} \quad \varnothing \quad 0.0005}$	CONCENTRIC TO C WITHIN 0.0005 DIAMETER
$\boxed{\perp \quad B \quad 0.002}$	PERPENDICULAR TO B WITHIN 0.002	$\boxed{\equiv \quad A \quad 0.010}$	SYMMETRICAL WITH A WITHIN 0.010
$\boxed{\parallel \quad A \quad 0.002}$	PARALLEL TO A WITHIN 0.002	$\boxed{\sphericalangle \quad A \quad 0.005}$	ANGULAR TOLERANCE 0.005 WITH A
$\boxed{\bigcirc \quad 0.002}$	ROUND WITHIN 0.002	$\boxed{\oplus \quad B \quad \varnothing \quad 0.002 \quad \textcircled{S}}$	LOCATED AT TRUE POSITION WITHIN 0.002 DIA IN RELATION TO DATUM B, REGARDLESS OF FEATURE SIZE
$\boxed{\bigcirc \quad 0.010}$	CYLINDRICAL SURFACE MUST LIE BETWEEN TWO CONCENTRIC CYLINDERS, ONE OF WHICH HAS A RADIUS 0.010 INCH GREATER THAN THE OTHER	$\boxed{\perp \quad A \quad \varnothing \quad 0.010 \quad \textcircled{M} \quad 0.510 \quad \textcircled{P}}$	AXIS IS TOTALLY WITHIN A CYLINDER OF 0.010-INCH DIAMETER, PERPENDICULAR TO, AND EXTENDING 0.510-INCH ABOVE, DATUM A, MAXIMUM MATERIAL CONDITION
$\boxed{\frown \quad A \quad 0.006}$	EACH LINE ELEMENT OF THE SURFACE AT ANY CROSS SECTION MUST LIE BETWEEN TWO PROFILE BOUNDARIES 0.006 INCH APART IN RELATION TO DATUM PLANE A	$\boxed{2.000}$	EXACT DIMENSION IS 2.000
$\boxed{\triangle \quad A \quad 0.020}$	SURFACES MUST LIE WITHIN PARALLEL BOUNDARIES 0.02 INCH APART AND EQUALLY DISPOSED ABOUT TRUE PROFILE	OR 2.000 BSC	

True Position Dimensioning Symbols
 Figure 601

57-26-12

REPAIR-GENERAL

01

Page 603

Jul 10/86

FWD FRAME ASSEMBLY - REPAIR 1-1

113T1772-9, -10
113T1786-1, -2
015T0198-3, -4

NOTE: Refer to REPAIR-GEN for list of applicable standard practices.

1. Bearing Replacement (135, 220, IPL Fig. 1)

- A. Remove bearing.
- B. Install bearing and roller swage per 20-50-03, except install with wet sealant, BMS 5-95.
- C. Fillet seal bearing edges with sealant, BMS 5-95.

2. Refinish

- A. Frame (140, 267, 270) -- Chromic acid anodize and apply one coat primer, BMS 10-11, type 1 (F-18.13). Omit primer from bearing hole. Material: Aluminum alloy.
- B. Frame Assy (120, 145, 150) -- Apply enamel, BMS 10-60, color BAC707 gray gloss (F-14.9813). Omit enamel from bearing.

57-26-12

REPAIR 1-1

01.1

Page 601

Apr 01/92

AFT FRAME ASSEMBLY – REPAIR 2-1

113T1774-9, -10, -17, -18

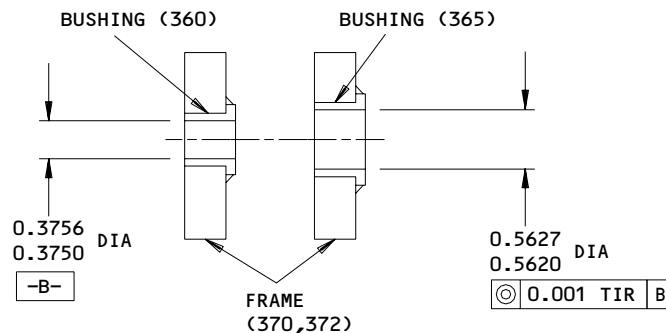
NOTE: Refer to REPAIR-GEN for list of applicable standard practices.

 1. Bushing Replacement (360, 365, IPL Fig. 1)

- A. Remove bushings.
- B. Install bushings per 20-50-03, except install with wet sealant, BMS 5-95.
- C. Machine bushings per Fig. 601.
- D. Fillet seal bushings with sealant, BMS 5-95.

 2. Refinish

- A. Frame (370, 372) -- Chromic acid anodize and apply one coat primer, BMS 10-11, type 1 (F-18.13). Omit primer from bushing holes. Material: Aluminum alloy.
- B. Frame Assy (345, 347) -- Apply enamel, BMS 10-60, color BAC707 gray gloss (F-14.9813). Omit enamel from bushings.



ITEM NUMBERS REFER TO IPL FIG. 1
 ALL DIMENSIONS ARE IN INCHES

Bushing Replacement
 Figure 601

57-26-12

REPAIR 2-1

01.1

Page 601

Jul 01/04

MISCELLANEOUS PARTS - REPAIR 3-1

1. Repair of parts listed in Fig. 601 consists of restoration of the original finish.

IPL FIG. & ITEM	MATERIAL	FINISH
<u>Fig. 1</u>		
Seal retainer (55, 60, 305, 310), Seal retainer support (320, 325)	Alum alloy	Chemical treat (colored film) and apply one coat primer, BMS 10-11, type 1 (F-18.06). Apply one coat enamel, BMS 10-11, type 2, color BAC707 gray gloss (F-20.02).
Access doors (70, 70A, 75, 75A), Clip (275), Corner doubler (277)	Alum alloy	Chromic acid anodize and apply one coat primer, BMS 10-11, type 1 (F-18.13). Omit primer from holes in access doors.
Access Door (70B, 70C, 75B, 75C)	Al Alloy	Chemical treat (F-17.07) all over. Apply BMS 10-11, type 1 primer on the inside surface. Apply BMS 10-79, type 3 primer on the exterior surface except no primer in holes.

Refinish Details
 Figure 601 (Sheet 1)

57-26-12

REPAIR 3-1

01.101

Page 601

Jul 01/04

IPL FIG. & ITEM	MATERIAL	FINISH
<p><u>Fig. 1</u> (Cont) Intercostal (105, 215)</p> <p>Bonded assys (390, 405)</p>	<p>Alum alloy</p> <p>Fiberglass/epoxy/honeycomb sandwich or aramid/graphite/epoxy/honeycomb sandwich</p>	<p>Chromic acid anodize and apply one coat primer, BMS 10-11, type 1 (F-18.13). Apply enamel, BMS 10-60, color BAC707 gray gloss (F-14.9813).</p> <p>Prepare surface and apply Dexter 28-C-1 static conditioner to exterior surface, then apply surfacer, Epocast 156 or Dexter 8-W-5 (SRF-14.672). Apply conductive coating, BMS 10-21, type 1 to ext. surfaces (SRF-14.68). Apply one coat primer, BMS 10-79, type 2 to ext. surfaces and trimmed edges (F-19.46).</p>

Refinish Details
 Figure 601 (Sheet 2)

57-26-12

REPAIR 3-1

01.1

Page 602

Jul 01/04

ASSEMBLY1. Materials

NOTE: Equivalent substitutes may be used.

- A. Adhesive -- type 60 (ref 20-50-12)
- B. Enamel -- BMS 10-11, type 2, color BAC701 black gloss (ref 20-60-02)
- C. Agent, mold release -- Garran 225 (ref 20-50-15)
- D. Sealant -- BMS 5-79 (ref 20-60-04)
- E. Fibers, 1/32 inch milled glass (ref 20-50-15)
- F. Insert, silicone sponge rubber -- BMS 1-23 (ref 20-60-04)
- G. Lockwire, MS20995C47
- H. Shim, liquid -- EA934 (ref 20-60-04)
 Resin, 3512S (ref 20-60-04)
 Hardener, 5412C (ref 20-60-04)

2. Assembly (IPL Fig. 1)

A. Use standard industry practices for assembly of this component, and the additional procedures in following steps.

B. Assemble frame assembly (145, 150).

(1) Install corner doubler (277). Delaminate shims (278, 279) as required. Max. gap before fastener installation is 0.005 inch. Apply primer, BMS 10-11, type 1 to shims (278, 279) after delamination.

(2) Install bolts (225, 226, 235, 236, 245).

(3) Install gussets (261, 264), if installed. Apply primer, BMS 10-11, type 1 to all areas of hole and install bolts (226B, 236B, 258).

C. Install intercostal (105, 215).

(1) Delaminate shims (100, 210) as required. Max. gap before fastener installation is 0.005 inch. Apply primer, BMS 10-11, type 1 to shims (100, 210) after delamination.

57-26-12

ASSEMBLY

01.1

Page 701

Apr 01/92

(2) Apply primer, BMS 10-11, type 1 to all areas of hole and install bolts (80, 190).

D. Install fwd or aft frame assemblies (120, 145, 150, 345, 347), if necessary, as follows:

- (1) Locate fwd or aft frame assemblies (120, 145, 150, 345, 347) in lower bonded assembly (405) per Fig. 701 and mark location. Max. gap between fwd or aft frame assemblies (120, 145, 150, 345, 347) and lower bonded assembly (405) is 0.006 inch.
- (2) Add castable filler (liquid shim) between fwd or aft frame assemblies (120, 145, 150, 345, 347) and lower bonded assembly (405) per 20-50-15, except as follows:
 - (a) Use mold release agent, Garran 225.
 - (b) Prepare liquid shim, EA934 as follows, or prepare optional liquid shim, 3512S per step E.(2)c).
 - 1) Mix 100 parts by weight of A to 300 parts by weight of B.
 - 2) Add 24 parts by weight milled glass fibers (1/32 inch length cationic binder, Owens Corning).
 - (c) Prepare optional liquid shim, epoxy resin, 3512S and hardener, 5412C as follows:
 - 1) Mix 100 parts by weight epoxy resin, 3512S and 10 parts by weight hardener, 5412C.
 - 2) Add 20 parts by weight milled glass fibers (1/32 inch length cationic binder, Owens Corning).
 - (d) Install fwd or aft frame assemblies (120, 145, 150, 345) with enough pressure to squeeze out excess liquid shim, but not enough to deform fwd or aft frame assemblies (120, 145, 150, 345, 347) or lower bonded assembly (405).
 - (e) Allow shim to cure.
- (3) Install rivets (125, 155, 355) and bolt (170).

57-26-12

ASSEMBLY
Page 702
Jul 01/04

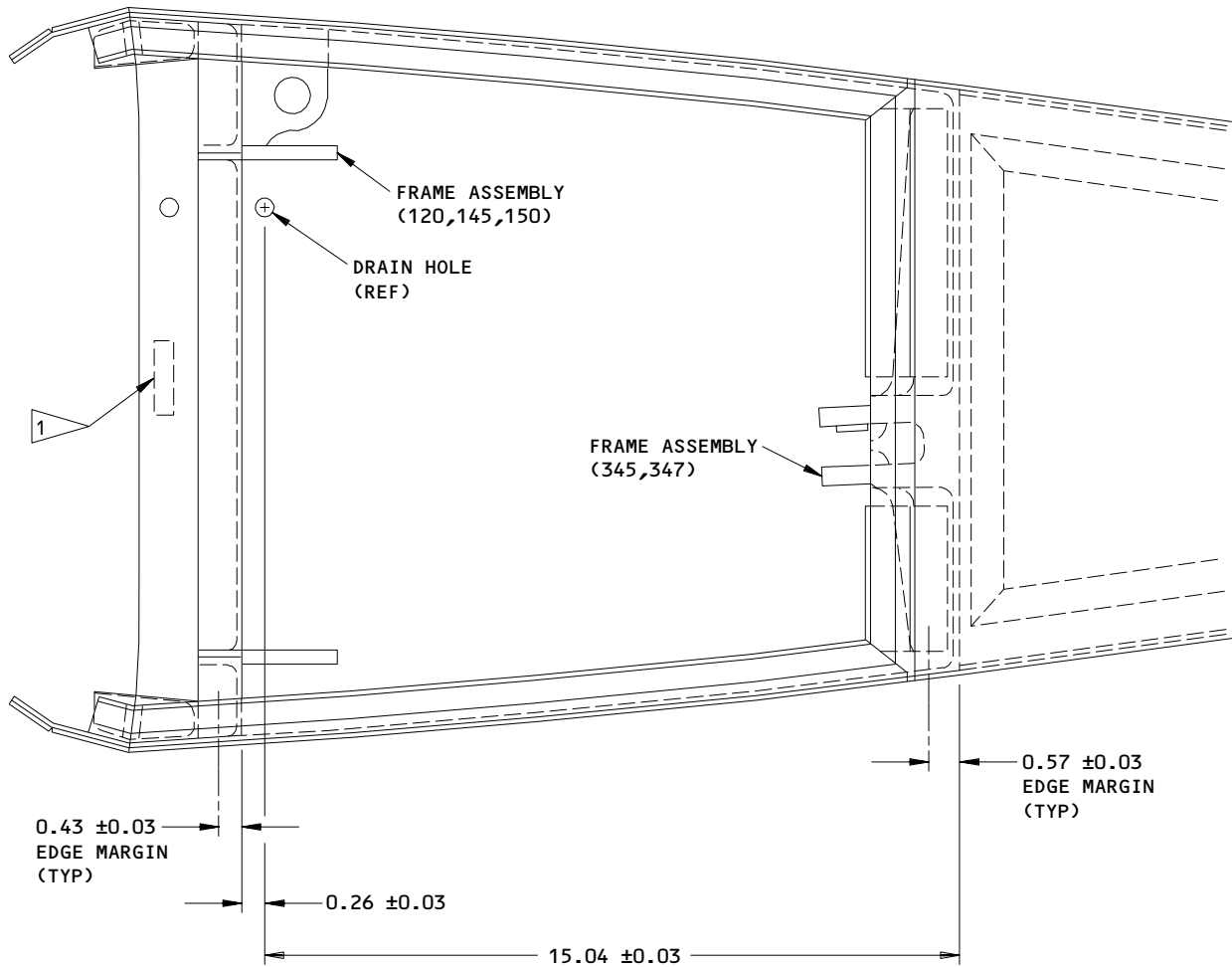
01.1



- (4) Install rivets (130, 160, 350) as follows:
- (a) Abrade 1 inch diameter area of lower bonded assembly (405) centered on rivet (130, 160, 350) holes to remove primer and expose conductive coating.
 - (b) Apply conductive coating, BMS 10-21, type 1 to abraded areas and countersink of holes.
 - (c) Install rivet (130, 160, 350).

57-26-12ASSEMBLY
Page 703
Jul 01/04

01.1



1 STENCIL ID. NUMBER PER SOPM 20-50-10
 HERE. STENCIL "517FB" ON FAIRING
 ASSEMBLY (1 THRU 1K) AND "671FB ON
 FAIRING ASSEMBLY (5 THRU 5K)

ITEM NUMBERS REFER TO IPL FIG. 1
 ALL DIMENSIONS ARE IN INCHES

Frame and Stencil Locations
 Figure 701

57-26-12

ASSEMBLY
 Page 704
 Jul 01/04

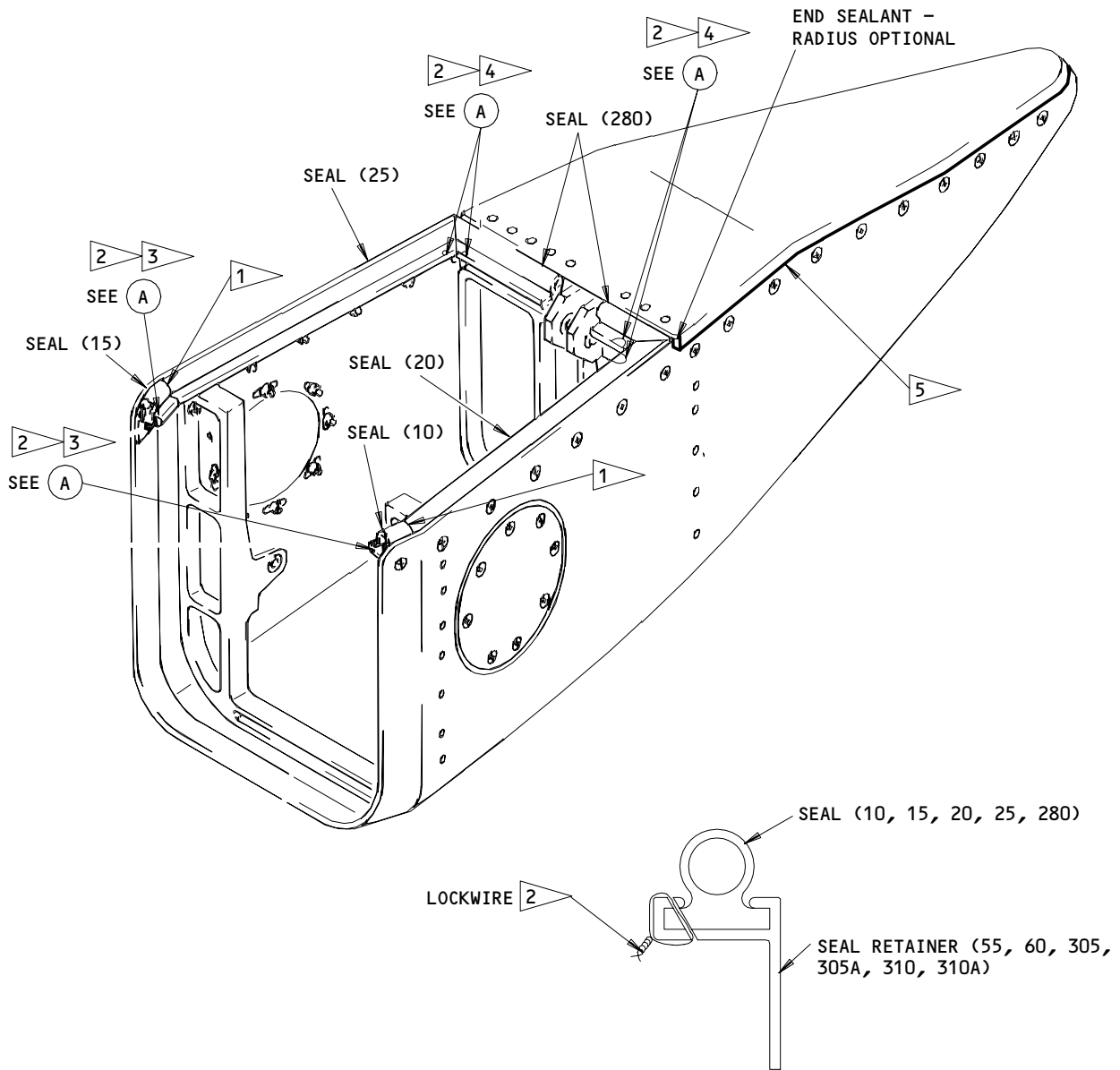
01.1

**BOEING**
COMPONENT
MAINTENANCE MANUAL

- | E. Install seals (10, 15, 20, 25, 280)(see Fig. 702).
 - (1) Bond seal (10) to seal (15) and seal (20) to seal (25) per 20-50-12, type 60 using 1-inch long silicone sponge insert.
- | (2) Install seals (10, 15, 20, 25, 280) and lockwire in place per 20-50-02. Drill 0.096-0.103 inch diameter holes for lockwire, if necessary, located per Fig. 702.

57-26-12ASSEMBLY
Page 705
Apr 01/92

01.1



- 1 BOND SEALS PER 20-50-12, TYPE 60 AND USE 1 INCH LONG SILICONE SPONGE INSERT.
- 2 INSTALL LOCKWIRE PER 20-50-02
- 3 0.10-0.16 FROM END
- 4 0.22-0.28 FROM END
- 5 APPLY SEALANT, BMS 5-79 PER 20-50-11 TO INDICATED AREA

TYPICAL (6 PLACES)

A

ALL DIMENSIONS ARE IN INCHES

Seal Installation and Sealant Application
 Figure 702

57-26-12
 ASSEMBLY
 Page 706
 Jul 10/86


BOEING
 COMPONENT
 MAINTENANCE MANUAL

F. Install access doors (70, 75)

(1) Stencil I.D. number on access doors (70, 75) per 20-50-10 and Fig. 703. Make letters 1/2 inch high using enamel, BMS 10-11, type 2, color BAC701 black gloss. Apply to inside surface of access door (70, 75).

(2) Install bolts (65A) as follows:

(a) Abrade countersunk area of hole for bolt (65A) to remove finish and allow for good electrical bonding of access doors (70, 75) to structure.

(b) Install bolt (65A).

G. Stencil I.D. number on fairing assembly (1, 5) per 20-50-10, Fig. 701. Make letters 1/2 inch high using enamel, BMS 10-11, type 2, color BAC701 black gloss. Apply to inside surface of fairing assembly (1, 5).

<u>NAME</u>	<u>ITEM NO.</u>	<u>I.D. NO.</u>
ACCESS DOOR	70,70B	571GL
ACCESS DOOR	70A,70C	671GR
ACCESS DOOR	75,75B	571GR
ACCESS DOOR	75A,75C	671GL
FAIRING ASSEMBLY	1 THRU 1K	571FB
FAIRING ASSEMBLY	5 thru 5K	671FB

I.D. NUMBERS
 FIGURE 703

H. Apply sealant, BMS 5-79 per 20-50-11 and Fig. 702 to gap between upper bonded assembly (390) and lower bonded assembly (405).

57-26-12

ASSEMBLY
 Page 707
 Jul 01/04

01.1



ILLUSTRATED PARTS LIST

1. This section lists and illustrates replaceable or repairable component parts. The Illustrated Parts Catalog contains a complete explanation of the Boeing part numbering system.

2. Indentures show parts relationships as follows:

Assembly

Detail Parts for Assembly

Subassembly

Attaching Parts for Subassembly

Detail Parts for Subassembly

Detail Installation Parts (Included only if installation parts may be returned to shop as part of assembly)

3. One use code letter (A, B, C, etc.) is assigned in the EFF CODE column for each variation of top assembly. All listed parts are used on all top assemblies except when limitations are shown by use code letter opposite individual part entries.

4. Letter suffixes (alpha-variants) are added to item numbers for optional parts, Service Bulletin modification parts, configuration differences (Except left- and right-hand parts), product improvement parts, and parts added between two sequential item numbers. The alpha-variant is not shown on illustrations when appearance and location of all variants of the part is the same.

5. Service Bulletin modifications are shown by the notations PRE SB XXXX and POST SB XXXX.

A. When a new top assembly part number is assigned by Service Bulletin, the notations appear at the top assembly level only. The configuration differences at detail part level are then shown by use code letter.

B. When the top assembly part number is not changed by the Service Bulletin, the notations appear at the detail part level.

6. Parts Interchangeability

Optional
(OPT)

The parts are optional to and interchangeable with other parts having the same item number.

Supersedes, Superseded By
(SUPSDS, SUPSD BY)

The part supersedes and is not interchangeable with the original part.

Replaces, Replaced By
(REPLS, REPLD BY)

The part replaces and is interchangeable with, or is an alternate to, the original part.

57-26-12

ILLUSTRATED PARTS LIST

01.1 Page 1001

Jul 01/04

7. Boeing Proprietary Color-Coded Parts

- A. Color-coded parts are identified with an alpha "SP" suffix. This entry represents consolidation of all color codes applicable for a given usage. Orders for color-coded parts should include the registry number of the airplane for which the parts are ordered.

57-26-12

ILLUSTRATED PARTS LIST
01.1 Page 1002
Jul 01/04


BOEING
 COMPONENT
 MAINTENANCE MANUAL
VENDORS

S0352 NIPPON MINIATURE BEARING CO LTD
 TOKYO, JAPAN

06725 AIR INDUSTRIES CORPORATION
 12570 KNOTT STREET
 GARDEN GROVE, CALIFORNIA 92641-3932
 FORMERLY AIR INDUSTRIES OF CALIF IN GARDENA, CALIF.

06950 SCREWCORP VSI AEROSPACE PRODUCTS DIV FAIRCHILD IND DIV
 13001 EAST TEMPLE AVENUE PO BOX 730
 CITY OF INDUSTRY, CALIFORNIA 91746-1417
 FORMERLY VB0096 AND VSI CORP SCREWCORP DIV
 FORMERLY IN CULVER CITY, CALIFORNIA

08524 DEUTSCH FASTENER CORP SEE CODE V97928

11815 CHERRY AEROSPACE FASTENERS DIV OF TEXTRON
 1224 EAST WARNER AVENUE PO BOX 2157
 SANTA ANA, CALIFORNIA 92707-0157
 FORMERLY IN LOS ANGELES, CALIF, FORMERLY CHERRY FASTENERS
 TOWNSEND DIV OF TEXTRON INC V71087

15653 FAIRCHILD FASTENERS KAYNAR PRODUCTS DIV
 800 S STATE COLLEGE BLVD
 FULLERTON, CALIFORNIA 92831-3001
 FORMERLY VK6405 MICRODOT AEROSP LTD; FORMERLY KAYNAR TECH
 KAYNAR DIV

15860 NEW HAMPSHIRE BALL BEARINGS, INC ASTRO DIVISION
 155 LEXINGTON AVENUE
 LACONIA, NEW HAMPSHIRE 03246-2937
 FORMERLY ASTRO BEARING CORP, LOS ANGELES, CALIF.

5M902 FAIRCHILD IND INC FAIRCHILD AEROSPACE FASTENER DIV
 3016 W LOMITA BLVD
 TORRANCE, CALIFORNIA 90505-5103
 FMLY IN REDONDO BEACH, CALIF

50632 KAMATICS CORP SUB OF KAMAN CORP
 1335 BLUE HILLS ROAD
 BLOOMFIELD, CONNECTICUT 06002-1304

52825 HOFFMAN CAMERA CORP
 19 GRAND AVENUE
 FARMINGTON, NEW YORK 11735-6315

57-26-12

 ILLUSTRATED PARTS LIST
 01.1 Page 1003
 Jul 01/04

VENDORS

52828 REPUBLIC FASTENER MFG CORP
1300 RANCHO CONEJO BLVD
NEWBURY PARK, CALIFORNIA 91320-1405
FORMERLY IN SYLMAR, CALIFORNIA

56878 SPS TECHNOLOGIES INC AEROSPACE AND INDUSTRIAL PRODUCTS DIV
301 HIGHLAND AVE
JENKINTOWN, PENNSYLVANIA 19046
FORMERLY STANDARD PRESSED STEEL

60119 MONADNOCK CO THE
18301 ARENTH AVENUE PO BOX 1222
CITY OF INDUSTRY, CALIFORNIA 91749
FORMERLY UNITED CARR FASTENER CORP VB0051 VB0056 VB0076
FORMERLY TRW ELECTRONIC COMPONENTS CINCH-MONADNOCK DIV
FORMERLY CINCH-MONADNOCK DIV OF TRW INC V76530

60516 WEST COAST AEROSPACE INC
812 MIRAFLORES STREET
SAN PEDRO, CALIFORNIA 90731-1439

71087 BOOTS ACFT NUT DIV TOWNSEND CO SEE TEXTRON INC CHERRY
FASTENER TOWNSEND DIV V11815

72962 HARVARD INDUSTRIES INC
3 WERNER WAY SUITE 210
LEBANON, NEW JERSEY 08833
FORMERLY AMERACE CORP ESNA DIV
FORMERLY ELASTIC STOP NUT IN UNION, NJ

73134 ROLLER BEARING COMPANY OF AMER DBA HEIM BEARINGS DIV
60 ROUND HILL RD
FAIRFIELD, CONNECTICUT 06430-0000
FORMERLY INCOM INTL HEIM DIV; HEIM UNIVERSAL CORP INCOM;
FORMERLY HEIM DIV INCOM INTL; IMO IND HEIM BEARINGS DIV

73197 HI-SHEAR TECHNOLOGY CORP
2600 SKYPARK DRIVE
TORRANCE, CALIFORNIA 90509

80539 SPS TECHNOLOGIES INC AEROSPACE PRODUCTS DIV
2701 SOUTH HARBOR BOULEVARD PO BOX 1259
SANTA ANA, CALIFORNIA 92702-1259
FORMERLY NUTT-SHEL DIV OF SPC WESTERN CO V80539
AND STANDARD PRESSED STEEL WESTERN DIV V17279

57-26-12

ILLUSTRATED PARTS LIST
01.1 Page 1004
Jul 01/04

**BOEING**
COMPONENT
MAINTENANCE MANUALVENDORS

81376 SMITH ACQUISITION COMPANY
2240 BUENA VISTA
BALDWIN PARK, CALIFORNIA 91706

9N513 VOI SHAN/CHATSWORTH DIV OF VSI CORP SUB OF FAIRCHILD IND
CHATSWORTH, CALIFORNIA 91311-5013
COMPANY NO LONGER WISHES TO BE CONSIDERED FOR FED CONTRCTG

92215 FAIRCHILD IND INC FAIRCHILD AEROSPACE FASTENER DIV
3010 W LOMITA BLVD
TORRANCE, CALIFORNIA 90505-5102
FORMERLY VOI-SHAN IN CULVER CITY, CALIF

97613 SARGENT CONTROLS & AEROSPACE/KAHR BEARING DIV
5675 W BURLINGAME RD
TUCSON, ARIZONA 85743
FORMERLY AETNA STEEL PROD KAHR BEARING DIV V96579
FORMERLY SARGENT IND KAHR BEARING DIV, BURBANK, CALIFORNIA

97928 SEE V17446 HUCK INTL
HUCK INTL SEE V17446 HUCK INTL
SEE V17446 HUCK INTL

57-26-12ILLUSTRATED PARTS LIST
01.1 Page 1005
Jul 01/04

PART NUMBER	AIRLINE PART NO.	FIG.	ITEM	TTL REQ
ADW04V301NC		1	135	3
		1	220	3
AN960-10		1	45	12
		1	335	2
AN960-10L		1	40	2
		1	287	5
BACB10FA04GC		1	135	3
		1	220	3
BACB28AM09B029A		1	365	1
BACB30LH3-24		1	170	3
BACB30LJ3-3		1	80	4
BACB30LJ3-4		1	190	4
BACB30LM3-4		1	80A	4
		1	190A	4
BACB30MB6A2		1	262	14
BACB30MC6-18		1	258	1
BACB30MC6A18		1	226B	1
BACB30MC6A5		1	236B	3
BACB30MY6K16		1	225	1
		1	226	1
BACB30MY6K2		1	230	8
BACB30MY6K3		1	235	4
		1	236	3
BACB30MY6K4		1	240	1
BACB30MY6K5		1	245	2
BACB30MY6K7		1	250	2
BACB30NM3K3		1	285B	5
BACB30NN3K3		1	35	12
		1	65A	14
		1	375	18
BACB30NN3K4		1	28	2
		1	30	4
		1	65C	14
		1	67	2
		1	375A	18

57-26-12

 ILLUSTRATED PARTS LIST
 01.1 Page 1006
 Jul 01/04


BOEING
 COMPONENT
 MAINTENANCE MANUAL

PART NUMBER	AIRLINE PART NO.	FIG.	ITEM	TTL REQ
BACB30NN3K5		1	330	2
BACC30M6		1	255	18
		1	256	4
BACC30X6		1	256B	4
		1	259	1
		1	263	14
BACN10JC3		1	50	14
BACN10JC3		1	185	3
		1	340	2
BACN10JC3CD		1	50A	14
BACN10JN3CD		1	95	4
		1	200	4
BACN10KE3B2		1	300	1
		1	340A	2
		1	385	18
		1	420	16
BACN10KE3E2		1	295	4
BACR15BA3AD		1	90	8
		1	205	8
		1	290	10
		1	380	36
		1	415	32
BACR15BA3AD8		1	205A	8
BACR15BA6AD		1	125	25
		1	155	19
		1	355	15
BACR15BB6B		1	110	2
BACS40R008C010F		1	100A	2
BACS40R08C08F		1	278	1
BACS40R08C10F		1	100	2
BACS40R08C31F		1	279	1
BACS40R19C26F		1	210	1

57-26-12

ILLUSTRATED PARTS LIST

01.1

Page 1007

Jul 01/04

PART NUMBER	AIRLINE PART NO.	FIG.	ITEM	TTL REQ
BACW10BP3CD		1	85	4
		1	195	4
BACW10CA3CCS		1	180	3
BACW10CA3CVS		1	175	3
BRFM20C3D		1	95	4
		1	200	4
BRFR120A3-2		1	295	4
BRFR220A3-2		1	300	1
		1	340A	2
		1	385	18
		1	420	16
BRH10A3		1	50	14
		1	185	3
		1	340	2
BRH10C3D		1	50A	14
B30MY6K16		1	225	1
B30MY6K16		1	226	1
B30MY6K2		1	230	8
B30MY6K3		1	235	4
		1	236	3
B30MY6K4		1	240	1
B30MY6K5		1	245	2
B30MY6K7		1	250	2
F51750-3-2		1	300	1
		1	340A	2
		1	385	18
		1	420	16
F51752-3-2		1	295	4
HL10VAZ6-16		1	225	1
		1	226	1
HL10VAZ6-2		1	230	8
HL10VAZ6-3		1	235	4
		1	236	3
HL10VAZ6-4		1	240	1
HL10VAZ6-5		1	245	2
HL10VAZ6-7		1	250	2
HL1052PB6-18		1	258	1
HL1187-6		1	256B	4
		1	259	1
		1	263	14
HL448UC6-2		1	262	14
HL452-6-18		1	226B	1
HL452-6-5		1	236B	3
HL452UC6-18		1	226B	1
HL452UC6-5		1	236B	3

57-26-12

 ILLUSTRATED PARTS LIST
 01.1 Page 1008
 Jul 01/04


BOEING
 COMPONENT
 MAINTENANCE MANUAL

PART NUMBER	AIRLINE PART NO.	FIG.	ITEM	TTL REQ
HL64-6-18		1	258	1
HL79-6		1	255	18
		1	256	4
HL87-6		1	256B	4
		1	259	1
		1	263	14
H10-3BAC		1	50	14
		1	185	3
		1	340	2
H51650-3BAC		1	50A	14
KSC152200BZ04GC		1	135	3
		1	220	3
KWDB04-35		1	135	3
		1	220	3
K29646-3S		1	175	3
K29913-3S		1	180	3
L806X6-18		1	258	1
L806X6A18		1	226B	1
L806X6A5		1	236B	3
MF51637-3		1	95	4
		1	200	4
NAS1149E0332P		1	287A	5
NAS1149E0363P		1	40A	2
		1	45A	12
		1	335A	2
NAS1399D6A6		1	165	1
		1	315	8
NAS1399MW6-6		1	130	2
		1	160	2
		1	350	2
NS103191-02-2		1	300	1
		1	340A	2
		1	385	18
		1	420	16
NS103194-02-2		1	295	4
NS202101-02		1	50	14
		1	185	3
		1	340	2
NS202486-02		1	50A	14
NS202487-02		1	95	4
		1	200	4
RMF9213-2-3		1	300	1
		1	340A	2
		1	385	18
		1	420	16

57-26-12

ILLUSTRATED PARTS LIST

01.1

Page 1009

Jul 01/04

PART NUMBER	AIRLINE PART NO.	FIG.	ITEM	TTL REQ
RMF9216-2-3		1	295	4
RMLH9075-3W		1	50	14
		1	185	3
RMLH9075-3W		1	340	2
SWKRS04-350SC		1	135	3
		1	220	3
T6C1032JCD		1	50A	14
		1	185	3
		1	340	2
T81243CDS		1	95	4
		1	200	4
VN303A02		1	50	14
		1	185	3
		1	340	2
WC448X6-18		1	226B	1
WC448X6-5		1	236B	3
WC4486-2		1	262	14
WES04FAGC		1	135	3
		1	220	3
WHTFA04VC		1	135	3
		1	220	3
012T2400-12		1	360	1
015T0198-3		1	145B	1
015T0198-4		1	147A	1
015T0198-5		1	264	1
015T0198-7		1	261	1
015T0198-8		1	261J	1
102F9201M3		1	95	4
		1	200	4
102LH9075-3W		1	50A	14
113T1565-1		1	150	1

57-26-12

 ILLUSTRATED PARTS LIST
 01.1 Page 1010
 Jul 01/04


BOEING
 COMPONENT
 MAINTENANCE MANUAL

PART NUMBER	AIRLINE PART NO.	FIG.	ITEM	TTL REQ
113T1565-1,		1	190	4
		1	195	4
		1	200	4
		1	205	8
		1	210	1
		1	215	1
113T1565-2		1	152	1
		1	190	4
		1	195	4
		1	200	4
		1	205	8
		1	210	1
113T1714-11		1	215	1
		1	70	1
		1	75	1
		1	75A	1
		1	70B	1
		1	70C	1
		1	75B	1
		1	75C	1
		1	282	1
		1	320	1
		1	325	1
113T1770-10		1	20	1
113T1770-11		1	25	1
113T1770-12		1	10	1
113T1770-13		1	15	1
113T1770-14		1	1	RF
113T1770-15		1	5	RF
113T1770-16		1	1A	RF
113T1770-25SP		1	5A	RF
113T1770-26SP		1	55	1
113T1770-27		1	1B	RF
113T1770-28		1		
113T1770-3		1		
113T1770-31SP		1		

57-26-12

ILLUSTRATED PARTS LIST

01.1

Page 1011

Jul 01/04

PART NUMBER	AIRLINE PART NO.	FIG.	ITEM	TTL REQ
113T1770-32SP		1	5B	RF
113T1770-35		1	1C	RF
113T1770-36		1	5C	RF
113T1770-39		1	1D	RF
113T1770-4		1	60	1
113T1770-40		1	5D	RF
113T1770-41		1	1E	RF
113T1770-42		1	5E	RF
113T1770-43		1	1F	RF
113T1770-44		1	5F	RF
113T1770-45		1	1G	RF
113T1770-46		1	5G	RF
113T1770-47		1	1H	RF
113T1770-48		1	5H	RF
113T1770-49SP		1	1J	RF
113T1770-5		1	305	1
113T1770-50SP		1	5J	RF
113T1770-51SP		1	1K	RF
113T1770-52SP		1	5K	RF
113T1770-6		1	307	1
113T1770-7		1	310	1
113T1770-8		1	312	1
113T1770-9		1	280	1
113T1771-10		1	425	2
113T1771-15		1	405	1
113T1771-16		1	407	1
113T1771-19		1	405B	1
113T1771-20		1	407A	1
113T1771-21		1	435	1
113T1771-22		1	440	1
113T1771-23		1	390B	1
113T1771-24		1	395A	1
113T1771-29		1	405C	1
113T1771-3		1	390	1
113T1771-30		1	407B	1
113T1771-31		1	435A	1
113T1771-32		1	440A	1
113T1771-37		1	390C	1
113T1771-38		1	395B	1
113T1771-4		1	395	1

57-26-12

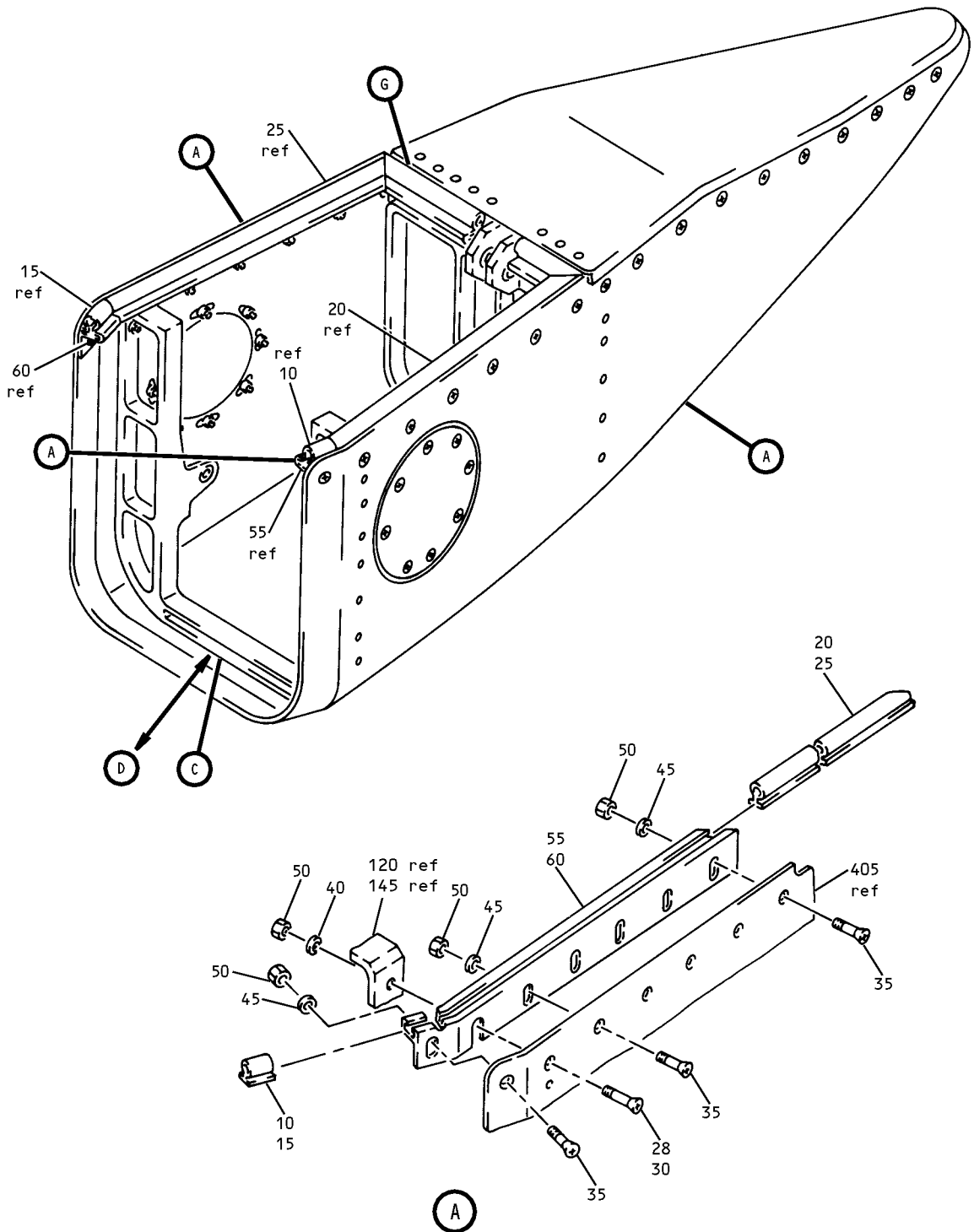
 ILLUSTRATED PARTS LIST
 01.1 Page 1012
 Jul 01/04


BOEING
 COMPONENT
 MAINTENANCE MANUAL

PART NUMBER	AIRLINE PART NO.	FIG.	ITEM	TTL REQ
113T1772-10		1	147	1
		1	152	1
113T1772-11		1	267	1
113T1772-12		1	268	1
113T1772-13		1	270	1
113T1772-14		1	272	1
113T1772-15		1	275	1
113T1772-9		1	145	1
		1	150	1
113T1774-10		1	346	1
113T1774-11		1	370	1
113T1774-12		1	371	1
113T1774-17		1	347	1
113T1774-18		1	348	1
113T1774-19		1	372	1
113T1774-20		1	373	1
113T1774-9		1	345	1
113T1779-1		1	277	1
113T1779-2		1	277J	1
113T1785-1		1	105	1
		1	215	1
113T1786-1		1	120	1
113T1786-2		1	122	1
113T1786-3		1	140	1
113T1786-4		1	142	1
113T1786-7		1	140B	1
113T1786-8		1	142A	1
66014-6		1	255	18
		1	256	4
69308-6A2		1	262	14
70186-3S		1	175	3
70189-3S		1	180	3
922005-3		1	175	3
922006-3		1	180	3
942005-3		1	175	3
942006-3		1	180	3
96-02		1	50	14
		1	185	3
		1	340	2

57-26-12

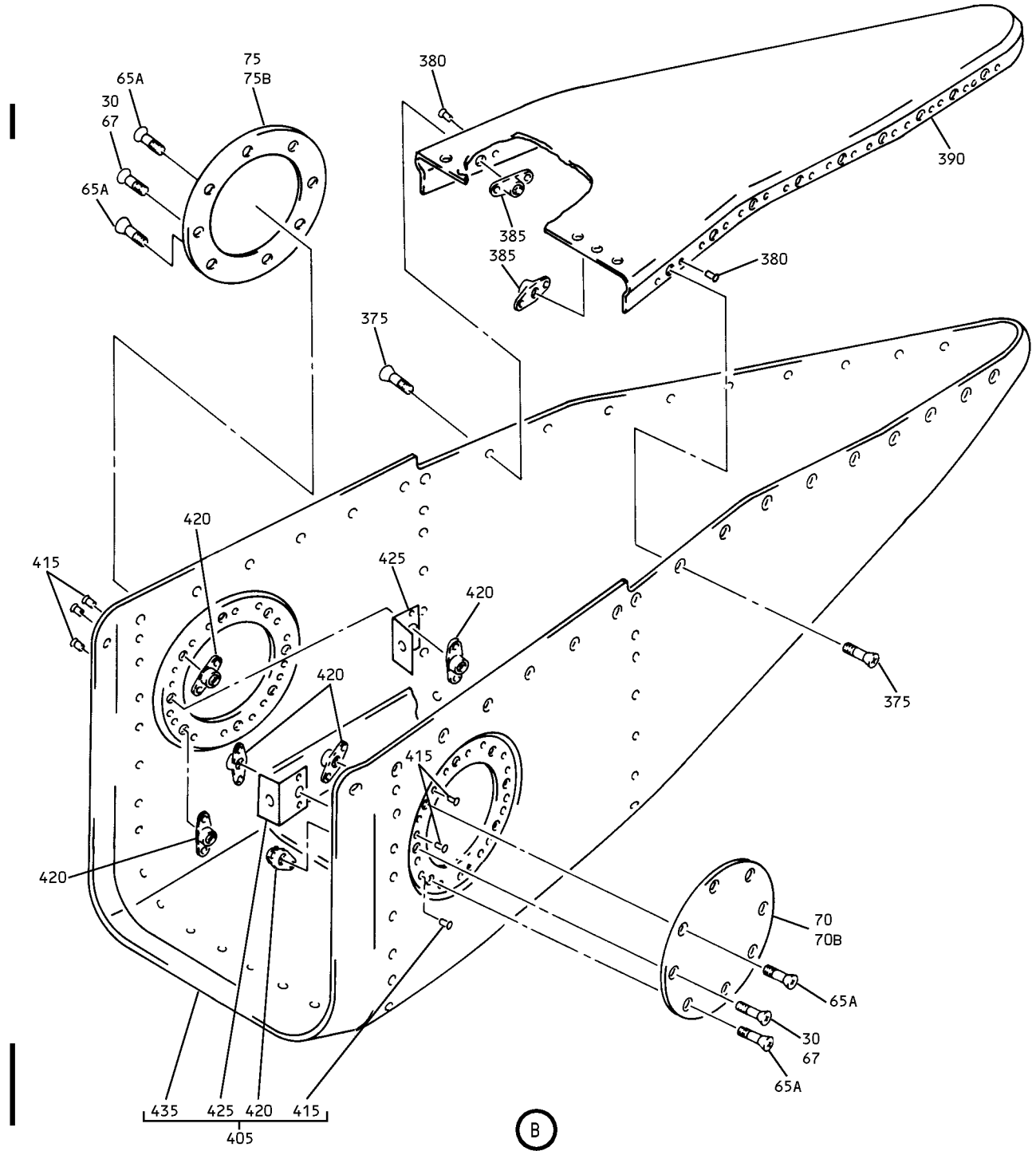
 ILLUSTRATED PARTS LIST
 01.1 Page 1013
 Jul 01/04



Inboard Trailing Edge Flap No. 3 Aft Fairing Assembly
 Figure 1 (Sheet 1)

57-26-12

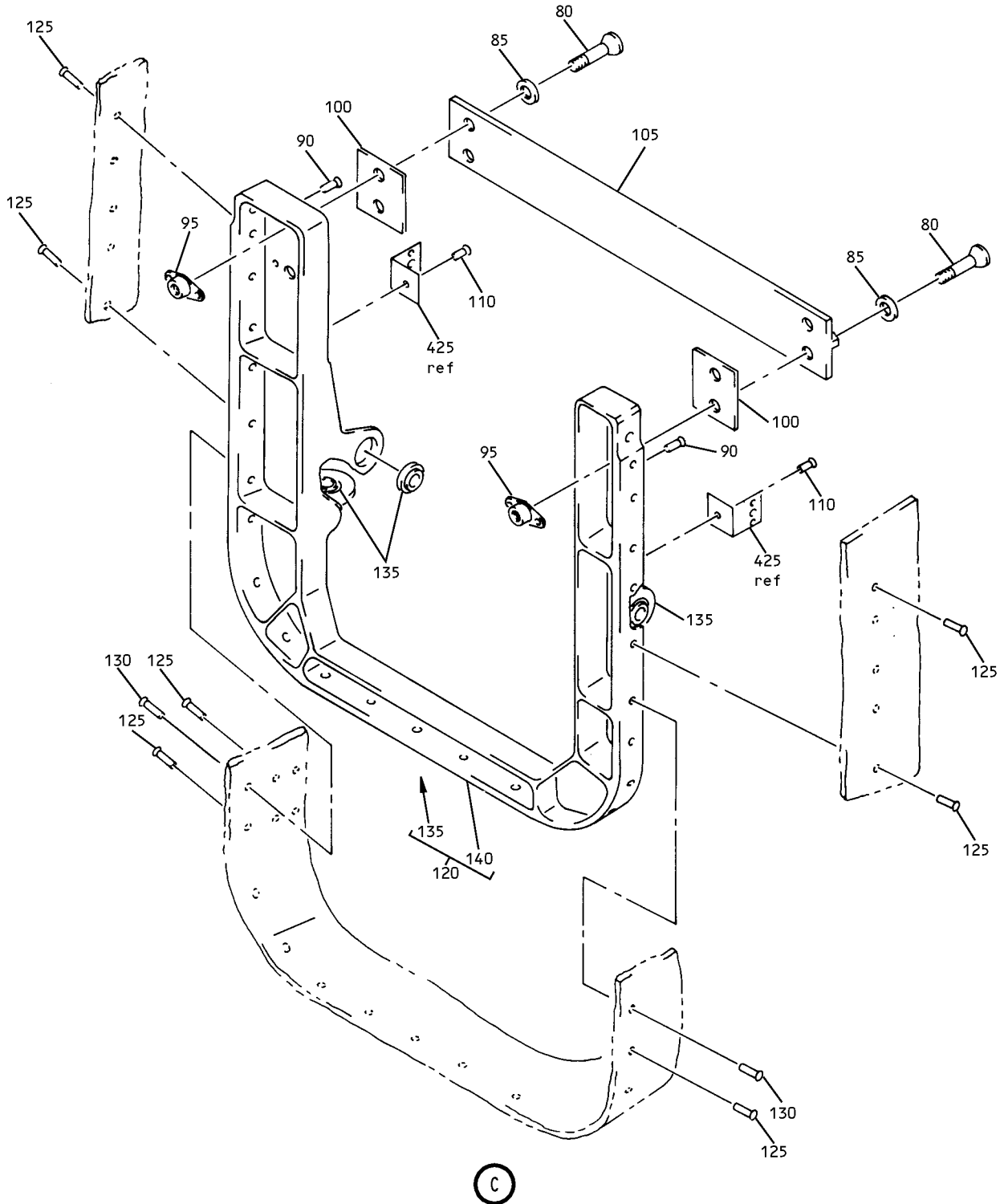
ILLUSTRATED PARTS LIST
 01.1 Page 1014
 Jul 01/04



Inboard Trailing Edge Flap No. 3 Aft Fairing Assembly
Figure 1 (Sheet 2)

57-26-12

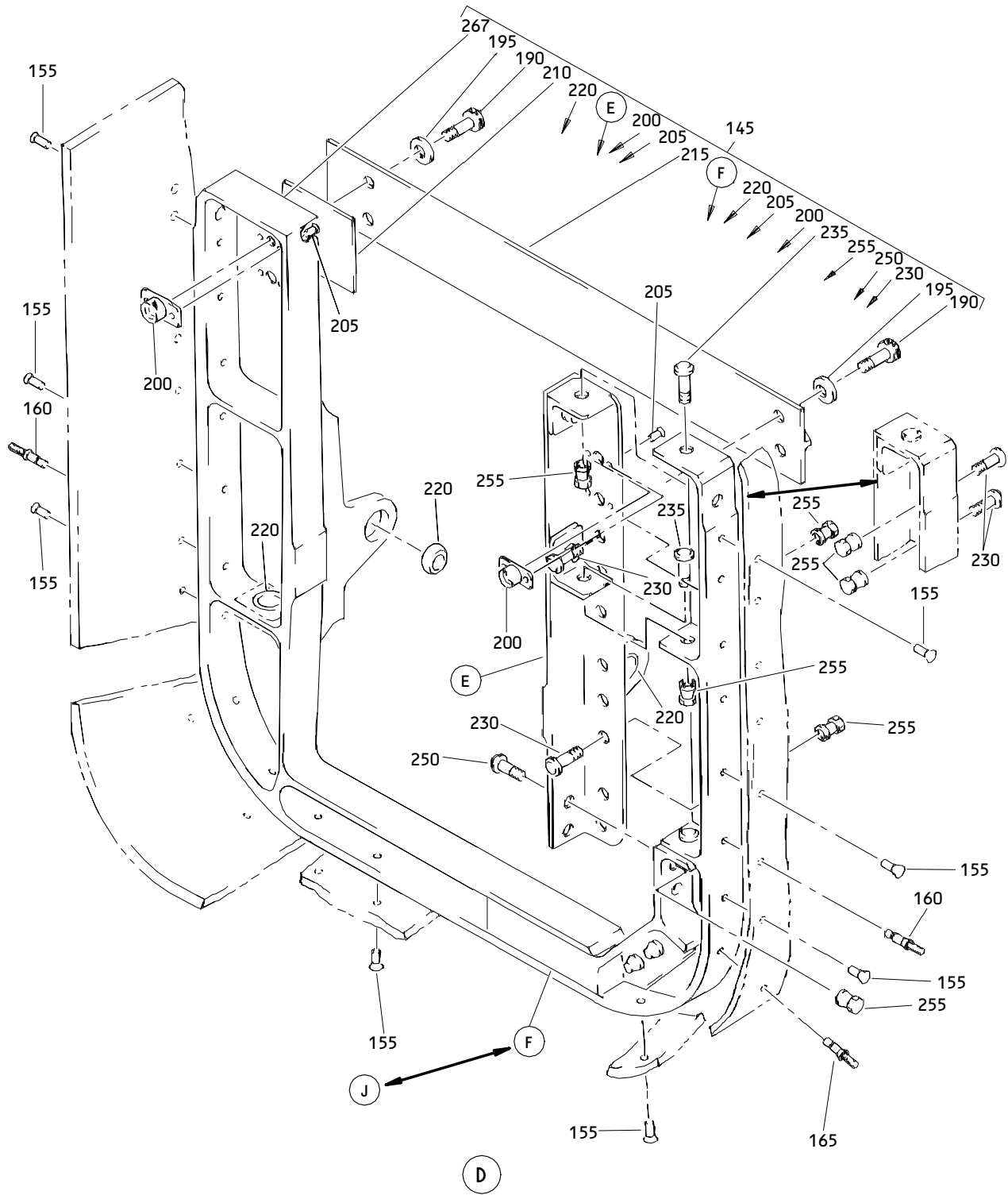
ILLUSTRATED PARTS LIST
01.1 Page 1015
Jul 01/04



Inboard Trailing Edge Flap No. 3 Fairing Assembly
Figure 1 (Sheet 3)

57-26-12

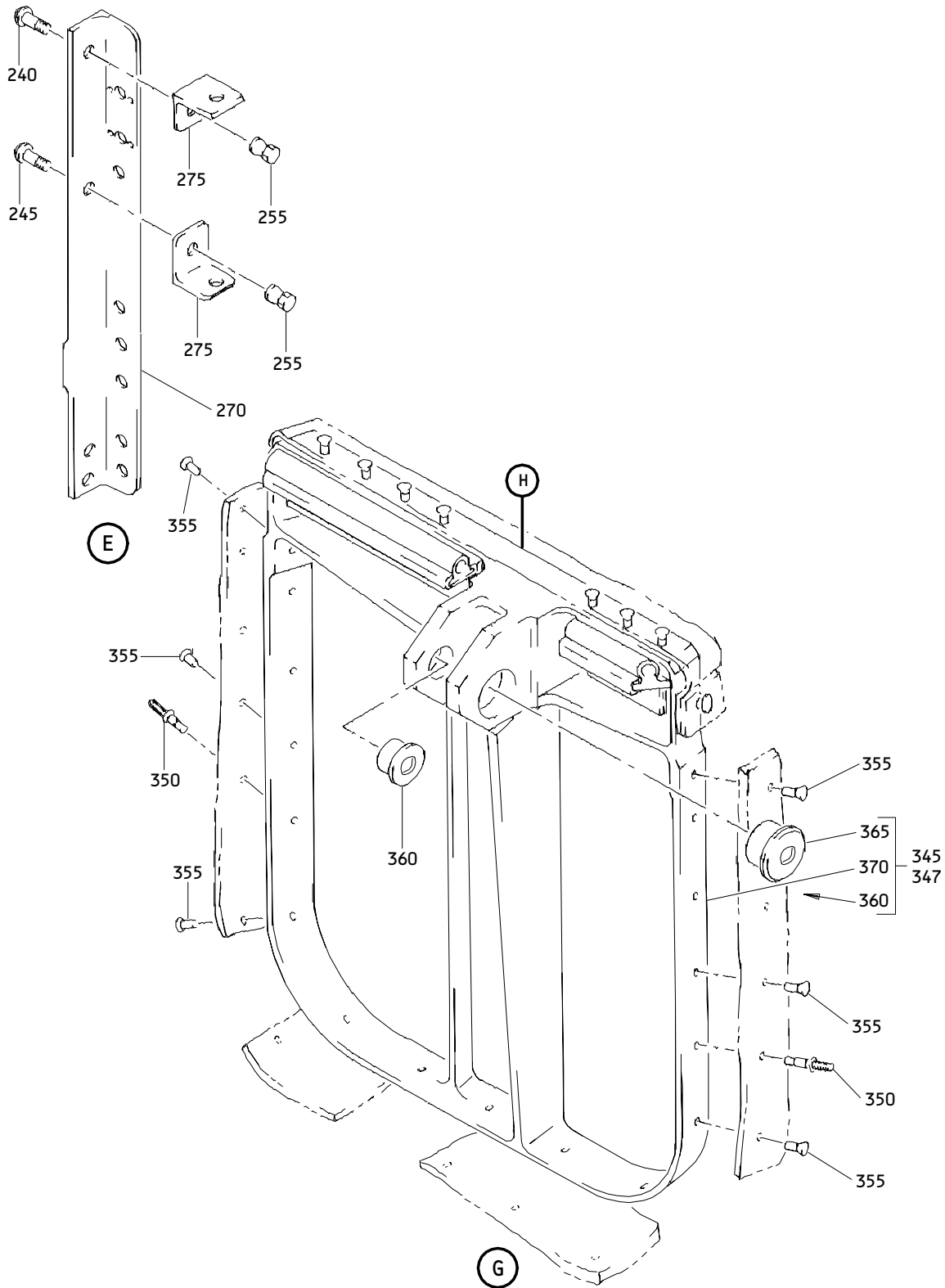
ILLUSTRATED PARTS LIST
01.1 Page 1016
Jul 01/04



Inboard Trailing Edge Flap No. 3 Aft Fairing Assembly
Figure 1 (Sheet 4)

57-26-12

ILLUSTRATED PARTS LIST
01.1 Page 1017
Jul 01/04



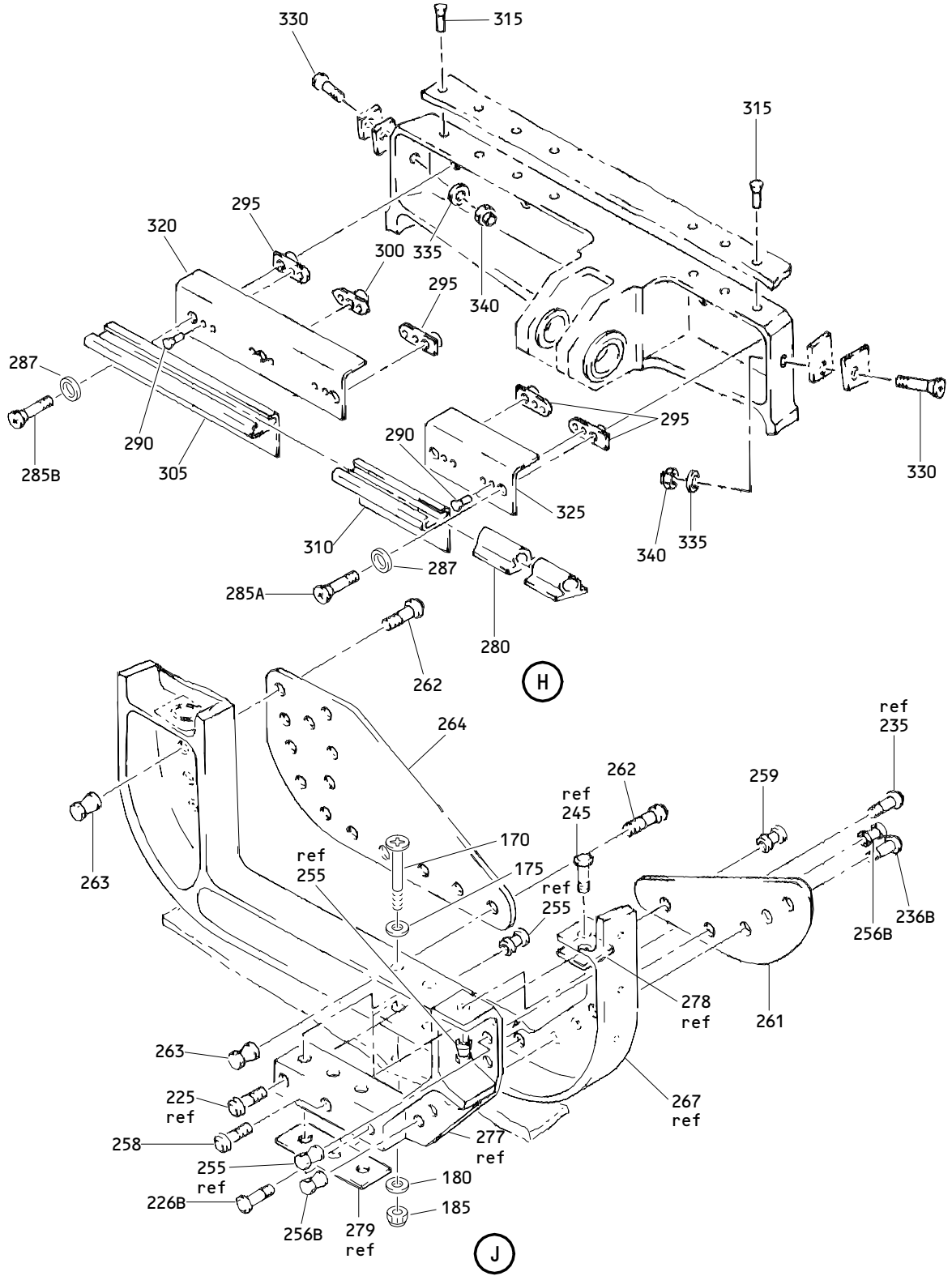
Inboard Trailing Edge Flap No. 3 Aft Fairing Assembly
 Figure 1 (Sheet 5)

57-26-12

ILLUSTRATED PARTS LIST
 01.1 Page 1018
 Jul 01/04

BOEING

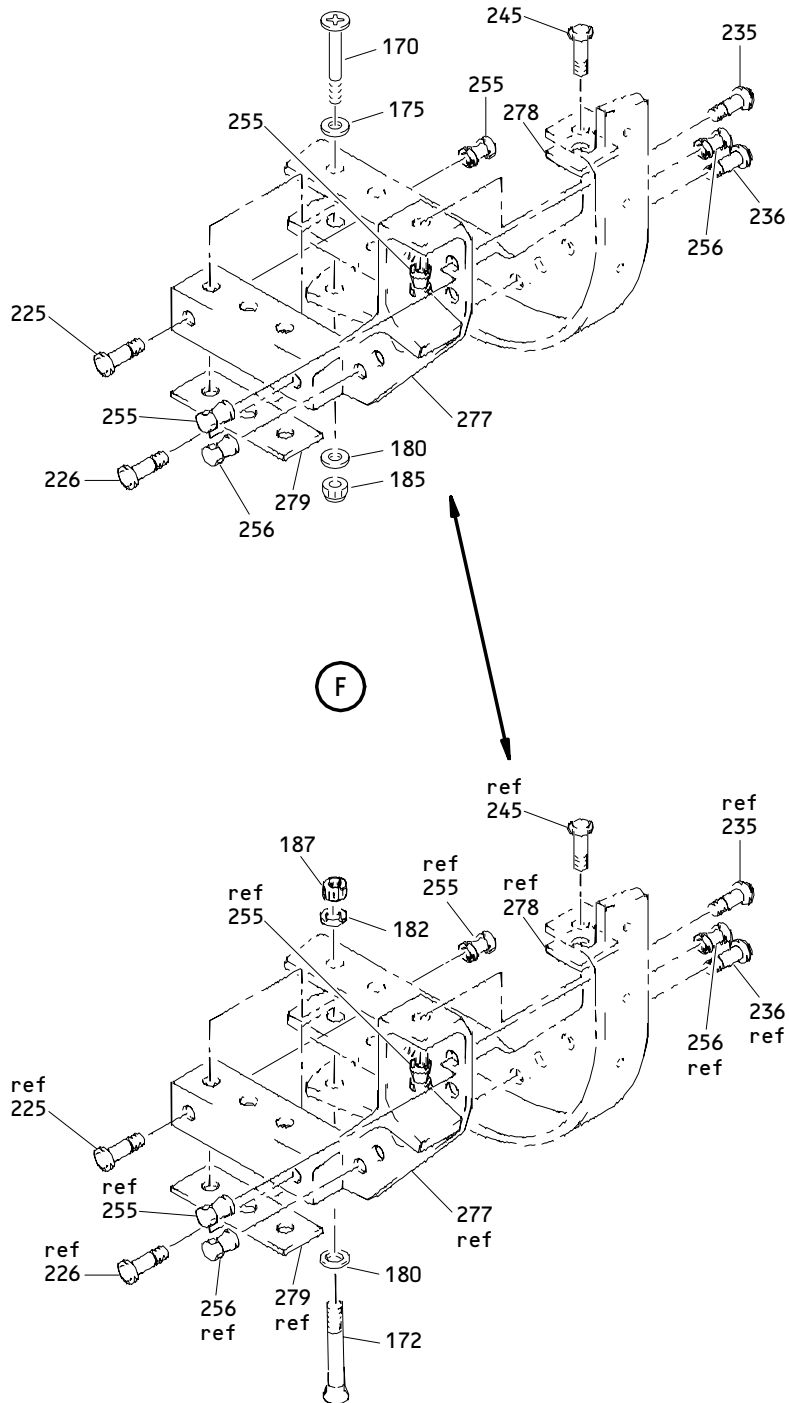
COMPONENT
MAINTENANCE MANUAL



Inboard Trailing Edge Flap No. 3 Aft Fairing Assembly
Figure 1 (Sheet 6)

57-26-12

ILLUSTRATED PARTS LIST
01.1 Page 1019
Jul 01/04



Inboard Trailing Edge Flap No. 3 Aft Fairing Assembly
 Figure 1 (Sheet 7)

57-26-12

ILLUSTRATED PARTS LIST
 01.1 Page 1020
 Jul 01/04


BOEING
 COMPONENT
 MAINTENANCE MANUAL

FIG. & ITEM	PART NO.	AIRLINE PART NUMBER	NOMENCLATURE 1234567	EFF CODE	QTY PER ASSY
01- -1	113T1770-25SP		FAIRING ASSY-INBD TE FLAP NO. 3 AFT (LH)	A	RF
-1A	113T1770-27		FAIRING ASSY-INBD TE FLAP NO. 3 AFT (LH) (VARIABLE)	B	RF
-1B	113T1770-31SP		FAIRING ASSY-INBD TE FLAP NO. 3 AFT (LH)	C	RF
-1C	113T1770-35		FAIRING ASSY-INBD TE FLAP NO. 3 AFT (LH) (VARIABLE)	D	RF
-1D	113T1770-39		FAIRING ASSY-INBD TE FLAP NO. 3 AFT (LH) (REWORK)	E	RF
-1E	113T1770-41		FAIRING ASSY-INBD TE FLAP NO. 3 AFT (LH) (REWORK)	F	RF
-1F	113T1770-43		FAIRING ASSY-INBD TE FLAP NO. 3 AFT (LH) (REWORK)	G	RF
-1G	113T1770-45		FAIRING ASSY-INBD TE FLAP NO. 3 AFT (LH) (VARIABLE)	H	RF
-1H	113T1770-47		FAIRING ASSY-INBD TE FLAP NO. 3 AFT (LH) (VARIABLE)	J	RF
R -1J	113T1770-49SP		FAIRING ASSY-INBD TE FLAP NO. 3 AFT (LH)	K	RF
R -1K	113T1770-51SP		FAIRING ASSY-INBD TE FLAP NO. 3 AFT (LH)	X	RF
-5	113T1770-26SP		FAIRING ASSY-INBD TE FLAP NO. 3 AFT (RH)	N	RF
-5A	113T1770-28		FAIRING ASSY-INBD TE FLAP NO. 3 AFT (RH) (VARIABLE)	P	RF
-5B	113T1770-32SP		FAIRING ASSY-INBD TE FLAP NO. 3 AFT (RH)	Q	RF
-5C	113T1770-36		FAIRING ASSY-INBD TE FLAP NO. 3 AFT (RH) (VARIABLE)	R	RF
-5D	113T1770-40		FAIRING ASSY-INBD TE FLAP NO. 3 AFT (RH) (REWORK)	S	RF
-5E	113T1770-42		FAIRING ASSY-INBD TE FLAP NO. 3 AFT (RH) (REWORK)	T	RF
-5F	113T1770-44		FAIRING ASSY-INBD TE FLAP NO. 3 AFT (RH) (REWORK)	U	RF
-5G	113T1770-46		FAIRING ASSY-INBD TE FLAP NO. 3 AFT (RH)	V	RF
-5H	113T1770-48		FAIRING ASSY-INBD TE FLAP NO. 3 AFT (RH)	W	RF
R -5J	113T1770-50SP		FAIRING ASSY-INBD TE FLAP NO. 3 AFT (RH)	L	RF
R -5K	113T1770-52SP		FAIRING ASSY-INBD TE FLAP NO. 3 AFT (RH)	Y	RF

57-26-12

ILLUSTRATED PARTS LIST

01.1

Page 1021

Jul 01/04

FIG. & ITEM	PART NO.	AIRLINE PART NUMBER	NOMENCLATURE 1234567	EFF CODE	QTY PER ASSY
01-10	113T1770-15		.SEAL- (MFD FROM EXTR RUBBER F25.01 10-60754-265 0.90 IN.)		1
15	113T1770-16		.SEAL- (MFD FROM EXTR RUBBER F25.01 10-60754-265 0.90 IN.)		1
20	113T1770-13		.SEAL- (MFD FROM EXTR RUBBER F25.01 10-60754-265 18.00 IN.)		1
25	113T1770-14		.SEAL- (MFD FROM EXTR RUBBER F25.01 10-60754-265 18.00 IN.)		1
R 28	BACB30NN3K4		.BOLT		2
30	BACB30NN3K4		.BOLT		4
35	BACB30NN3K3		.BOLT		12
40	AN960-10L		.WASHER	A-L, N-W	2
R -40A	NAS1149E0363P		.WASHER	X,Y	2
45	AN960-10		.WASHER	A-L, N-W	12
R -45A	NAS1149E0363P		.WASHER	X,Y	12
50	H10-3BAC		.NUT- (V15653) (SPEC BACN10JC3) (OPT NS202101-02 (V80539)) (OPT RMLH9075-3W (V72962)) (OPT T6S1032J (V71087)) (OPT VN303A02 (V92215)) (OPT 96-02 (V80539)) (OPT BRH10A3 (V52828))	A-L, N-W	14

57-26-12

ILLUSTRATED PARTS LIST

01.1

Page 1022

Jul 01/04


BOEING
 COMPONENT
 MAINTENANCE MANUAL

FIG. & ITEM	PART NO.	AIRLINE PART NUMBER	NOMENCLATURE 1234567	EFF CODE	QTY PER ASSY
R 01- -50A	BRH10C3D		.NUT- (V52828) (SPEC BACN10JC3CD) (OPT T6C1032JCD (V11815)) (OPT NS202486-02 (V80539)) (OPT 102LH9075-3W (V72962)) (OPT H51650-3BAC (V15653))	X,Y	14
55	113T1770-3		.RETAINER-SEAL		1
60	113T1770-4		.RETAINER-SEAL		1
65	BACB30N3K3		DELETED		
65A	BACB30NN3K3		.BOLT	A-L, N-W	14
65B	BACB30NN3K3		DELETED		
R -65C	BACB30NN3K4		.BOLT	W,X	14
R 67	BACB30NN3K4		.BOLT		2
70	113T1714-11		.DOOR-ACCESS (113T1714-25 I/W 113T1714-11 SUBJECT TO COLOR PREFERENCE)	A-G,J K,X	1
-70A	113T1714-12		.DOOR-ACCESS (113T1714-26 I/W 113T1714-12 SUBJECT TO COLOR PREFERENCE)	L,N-U W,Y	1
70B	113T1714-25		.DOOR-ACCESS (113T1714-25 I/W 113T1714-11 SUBJECT TO COLOR PREFERENCE)	H	1
-70C	113T1714-26		.DOOR-ACCESS (113T1714-26 I/W 113T1714-12 SUBJECT TO COLOR PREFERENCE)	V	1

57-26-12

ILLUSTRATED PARTS LIST

01.1

Page 1023

Jul 01/04

FIG. & ITEM	PART NO.	AIRLINE PART NUMBER	NOMENCLATURE 1234567	EFF CODE	QTY PER ASSY
01-75	113T1714-13		.DOOR-ACCESS (113T1714-27 I/W 113T1714-13 SUBJECT TO COLOR PREFERENCE)	A-G,J ,K,X	1
-75A	113T1714-14		.DOOR-ACCESS (113T1714-28 I/W 113T1714-14 SUBJECT TO COLOR PREFERENCE)	L,N-U ,W,Y	1
75B	113T1714-27		.DOOR-ACCESS (113T1714-27 I/W 113T1714-13 SUBJECT TO COLOR PREFERENCE)	H	1
-75C	113T1714-28		.DOOR-ACCESS (113T1714-28 I/W 113T1714-14 SUBJECT TO COLOR PREFERENCE)	V	1
80	BACB30LJ3-3		.BOLT	C,D, H-L,Q ,R,V, W	4
R -80A	BACB30LM3-4		.BOLT	X,Y	4
85	BACW10BP3CD		.WASHER	C,D, H-L,Q ,R, V-Y	4
90	BACR15BA3AD		.RIVET- (SIZE DETERMINE ON INST)	C,D, H-L,Q ,R,V, W	8

57-26-12

ILLUSTRATED PARTS LIST

01.1

Page 1024

Jul 01/04

BOEING
 COMPONENT
 MAINTENANCE MANUAL

FIG. & ITEM	PART NO.	AIRLINE PART NUMBER	NOMENCLATURE 1234567	EFF CODE	QTY PER ASSY
01-95	BRFM20C3D		.NUTPLATE- (V52828) (SPEC BACN10JN3CD) (OPT 102F9201M3 (V72962)) (OPT NS202487-02 (V80539)) (OPT MF51637-3 (V15653)) (OPT T81243CDS (V11815))	C,D, H-L,Q ,R, V-Y	4
100	BACS40R08C10F		.SHIM	A-L, N-W	2
R -100A	BACS40R008C010F		.SHIM	X,Y	2
105	113T1785-1		.INTERCOSTAL	C,D, H-L,Q ,R, V-Y	1
110	BACR15BB6B		.RIVET- (SIZE DETERMINE ON INST)		2
115	NAS1399CW6		DELETED		
120	113T1786-1		.FRAME ASSY-FWD	C,D, H-K,X	1
-120A	113T1786-2		DELETED		
R -122	113T1786-2		.FRAME ASSY-FWD	L,Q,R ,V,W, Y	1
125	BACR15BA6AD		ATTACHING PARTS .RIVET- (SIZE DETERMINE ON INST)	C,D, H-L,Q ,R, V-Y	25
130	NAS1399MW6-6		.RIVET	C,D, H-L,Q ,R, V-Y	2
			-----*		

57-26-12

FIG. & ITEM	PART NO.	AIRLINE PART NUMBER	NOMENCLATURE 1234567	EFF CODE	QTY PER ASSY
01-135	ADW04V301NC		..BEARING- (V15860) (SPEC BACB10FA04GC) (OPT SWKRS04-350SC (V81376)) (OPT KSC152200BZ04GC (V50632)) (OPT KWDB04-35 (V97613)) (OPT WES04FAGC (V73134)) (OPT WHTFA04VC (VS0352))	C,D, H-L,Q ,R, V-Y	3
140	113T1786-3		..FRAME- (OPT ITEM 140B)	C,D, H-K,X	1
-140A	113T1786-4		DELETED		
R -140B	113T1786-7		..FRAME- (OPT ITEM 140)	C,D, H-K,X	1
-140C	113T1786-8		DELETED		
R -142	113T1786-4		..FRAME- (OPT ITEM 142A)	L,Q,R ,V,W, Y	1
R -142A	113T1786-8		..FRAME- (OPT ITEM 142)	L,Q,R ,V,W, Y	1
145	113T1772-9		.FRAME ASSY-FWD (PRE SB 767-57-0014)	A,B	1
-145A	113T1772-10		DELETED		
-145B	015T0198-3		.FRAME ASSY-FWD (POST SB 767-57-0014)	A,B	1
-145C	015T0198-4		DELETED		
-145D	113T1772-9		.FRAME ASSY-FWD	E	1
-145E	113T1772-10		DELETED		
R -147	113T1772-10		.FRAME ASSY-FWD (PRE SB 767-57-0014)	N,P	1
R -147A	015T0198-4		.FRAME ASSY-FWD (POST SB 767-57-0014)	N,P	1
R -147B	113T1772-10		.FRAME ASSY-FWD	S	1
-150	113T1772-9		.FRAME ASSY-FWD (RWK DWG 113T1565-1)	F,G	1
-150A	113T1772-10		DELETED		

57-26-12

ILLUSTRATED PARTS LIST

01.1

Page 1026

Jul 01/04


BOEING
 COMPONENT
 MAINTENANCE MANUAL

FIG. & ITEM	PART NO.	AIRLINE PART NUMBER	NOMENCLATURE 1234567	EFF CODE	QTY PER ASSY
R 01-152	113T1772-10		.FRAME ASSY-FWD (RWK DWG 113T1565-2) ATTACHING PARTS	T,U	1
155	BACR15BA6AD		.RIVET- (SIZE DETERMINE ON INST)	A,B, E-G,N ,P, S-U,X	19
160	NAS1399MW6-6		.RIVET	A,B, E-G,N ,P, S-U,X	2
165	NAS1399D6A6		.RIVET- (SIZE DETERMINE ON INST)	,Y A,B, E-G,N ,P, S-U	1
170	BACB30LH3-24		.BOLT	A,B, E-G,N ,P, S-U,X	3
175	K29646-3S		.WASHER- (V15653) (SPEC BACW10CA3CVS) (OPT 70186-3S (V56878)) (OPT 922005-3 (V60119)) (OPT 942005-3 (V60119))	,Y A,B, E-G,N ,P, S-U,X	3

57-26-12

ILLUSTRATED PARTS LIST

01.1

Page 1027

Jul 01/04

FIG. & ITEM	PART NO.	AIRLINE PART NUMBER	NOMENCLATURE 1234567	EFF CODE	QTY PER ASSY
01-180	K29913-3S		.WASHER- (V15653) (SPEC BACW10CA3CCS) (OPT 70189-3S (V56878)) (OPT 922006-3 (V60119)) (OPT 942006-3 (V60119))	A,B, E-G,N ,P, S-U,X ,Y	3
185	H10-3BAC		.NUT- (V15653) (SPEC BACN10JC3) (OPT NS202101-02 (V80539)) (OPT RMLH9075-3W (V72962)) (OPT T6S1032J (V71087)) (OPT VN303A02 (V92215)) (OPT 96-02 (V80539)) (OPT BRH10A3 (V52828)) -----*-----	A,B, E-G,N ,P, S-U,X ,Y	3
190	BACB30LJ3-4		..BOLT- (RWK DWG 113T1565-1, 113T1565-2)	F,G,T ,U	4
-190A	BACB30LM3-4		..BOLT- (USED ON ITEMS 145B, 147A)	A,B,N ,P	4

57-26-12

 ILLUSTRATED PARTS LIST
 01.1 Page 1028
 Jul 01/04


BOEING
 COMPONENT
 MAINTENANCE MANUAL

FIG. & ITEM	PART NO.	AIRLINE PART NUMBER	NOMENCLATURE 1234567	EFF CODE	QTY PER ASSY
01-195	BACW10BP3CD		..WASHER- (RWK DWG 113T1565-1, 113T1565-2)	F,G,T ,U	4
-195A	BACW10BP3CD		..WASHER- (USED ON ITEMS 145B, 147A)	A,B,N ,P	4
200	BRFM20C3D		..NUTPLATE- (V52828) (SPEC BACN10JN3CD) (OPT 102F9201M3 (V72962)) (OPT NS202487-02 (V80539)) (OPT MF51637-3 (V15653)) (OPT T81243CDS (V11815)) (RWK DWG 113T1565-1, 113T1565-2)	F,G,T ,U	4
-200A	BRFM20C3D		..NUTPLATE- (V52828) (SPEC BACN10JN3CD) (OPT 102F9201M3 (V72962)) (OPT NS202487-02 (V80539)) (OPT MF51637-3 (V15653)) (OPT T81243CDS (V11815)) (USED ON ITEMS 145B, 147A)	A,B,N ,P	4
205	BACR15BA3AD		..RIVET- (SIZE DETERMINE ON INST) (RWK DWG 113T1565-1, 113T1565-2)	F,G,T ,U	8
-205A	BACR15BA3AD8		..RIVET- (USED ON ITEMS 145B, 147A)	A,B,N ,P	8

57-26-12

ILLUSTRATED PARTS LIST

01.1

Page 1029

Jul 01/04

FIG. & ITEM	PART NO.	AIRLINE PART NUMBER	NOMENCLATURE 1234567	EFF CODE	QTY PER ASSY
01-210	BACS40R19C26F		..SHIM- (RWK DWG 113T1565-1, 113T1565-2)	F,G,T ,U	1
-210A	BACS40R19C26F		..SHIM- (USED ON ITEMS 145B, 147A)	A,B,N ,P	AR
215	113T1785-1		..INTERCOSTAL- (RWK DWG 113T1565-1, 113T1565-2)	F,G,T ,U	1
-215A	113T1785-1		..INTERCOSTAL- (USED ON ITEMS 145B, 147A)	A,B,N ,P	1
220	ADW04V301NC		..BEARING- (V15860) (SPEC BACB10FA04GC) (OPT SWKRS04-350SC (V81376)) (OPT KSC152200BZ04GC (V50632)) (OPT KWDB04-35 (V97613)) (OPT WES04FAGC (V73134)) (OPT WHTFA04VC (VS0352))	A,B, E-G,N ,P, S-U	3
225	HL10VAZ6-16		..BOLT- (V60516) (SPEC BACB30MY6K16) (OPT B30MY6K16 (V97928))	A,B, E-G,N ,P, S-U	1
226	HL10VAZ6-16		..BOLT- (V60516) (SPEC BACB30MY6K16) (OPT B30MY6K16 (V97928))	E-G, S-U	1
-226A	HL10VAZ6-16		..BOLT- (V60516) (SPEC BACB30MY6K16) (OPT B30MY6K16 (V97928)) (USED ON ITEMS 145, 147)	A,B,N ,P	1

57-26-12

 ILLUSTRATED PARTS LIST
 01.1 Page 1030
 Jul 01/04


BOEING
 COMPONENT
 MAINTENANCE MANUAL

FIG. & ITEM	PART NO.	AIRLINE PART NUMBER	NOMENCLATURE 1234567	EFF CODE	QTY PER ASSY
01-226B	HL452UC6-18		..BOLT- (V60516) (SPEC BACB30MC6A18) (OPT HL452-6-18 (V56878)) (OPT HL452-6-18 (V60516)) (OPT HL452-6-18 (V73197)) (OPT HL452-6-18 (V80539)) (OPT HL452-6-18 (V06950)) (OPT HL452-6-18 (V97928)) (OPT L806X6A18 (V06725)) (OPT HL452-6-18 (V9N513)) (OPT WC448X6-18 (V60516)) (OPT HL452-6-18 (V06725)) (USED ON ITEMS 145B, 147A)	A,B,N ,P	1
230	HL10VAZ6-2		..BOLT- (V60516) (SPEC BACB30MY6K2) (OPT B30MY6K2 (V97928))	A,B, E-G,N ,P, S-U	8
235	HL10VAZ6-3		..BOLT- (V60516) (SPEC BACB30MY6K3) (OPT B30MY6K3 (V97928))	A,B, E-G,N ,P, S-U	4
236	HL10VAZ6-3		..BOLT- (V60516) (SPEC BACB30MY6K3) (OPT B30MY6K3 (V97928))	E-G, S-U	3

57-26-12

ILLUSTRATED PARTS LIST

01.1

Page 1031

Jul 01/04

FIG. & ITEM	PART NO.	AIRLINE PART NUMBER	NOMENCLATURE 1234567	EFF CODE	QTY PER ASSY
01- -236A	HL10VAZ6-3		..BOLT- (V60516) (SPEC BACB30MY6K3) (OPT B30MY6K3 (V97928)) (USED ON ITEMS 145, 147)	A,B,N ,P	3
236B	HL452UC6-5		..BOLT- (V60516) (SPEC BACB30MC6A5) (OPT HL452-6-5 (V56878)) (OPT HL452-6-5 (V60516)) (OPT HL452-6-5 (V73197)) (OPT HL452-6-5 (V80539)) (OPT HL452-6-5 (V06950)) (OPT HL452-6-5 (V97928)) (OPT L806X6A5 (V06725)) (OPT HL452-6-5 (V9N513)) (OPT WC448X6-5 (V60516)) (OPT HL452-6-5 (V06725)) (USED ON ITEMS 145B, 147A)	A,B,N ,P	3
240	HL10VAZ6-4		..BOLT- (V60516) (SPEC BACB30MY6K4) (OPT B30MY6K4 (V97928))	A,B, E-G,N ,P, S-U	1
245	HL10VAZ6-5		..BOLT- (V60516) (SPEC BACB30MY6K5) (OPT B30MY6K5 (V97928))	A,B, E-G,N ,P, S-U	2

57-26-12

ILLUSTRATED PARTS LIST

01.1

Page 1032

Jul 01/04


BOEING
 COMPONENT
 MAINTENANCE MANUAL

FIG. & ITEM	PART NO.	AIRLINE PART NUMBER	NOMENCLATURE 1234567	EFF CODE	QTY PER ASSY
01-250	HL10VAZ6-7		..BOLT- (V60516) (SPEC BACB30MY6K7) (OPT B30MY6K7 (V97928))	A,B, E-G,N ,P, S-U	2
255	HL79-6		..COLLAR- (V5M902) (SPEC BACC30M6) (OPT HL79-6 (V73197)) (OPT HL79-6 (V92215)) (OPT 66014-6 (V56878)) (OPT HL79-6 (V56878))	A,B, E-G,N ,P, S-U	18
256	HL79-6		..COLLAR- (V5M902) (SPEC BACC30M6) (OPT HL79-6 (V73197)) (OPT HL79-6 (V92215)) (OPT 66014-6 (V56878)) (OPT HL79-6 (V56878))	E-G, S-U	4
-256A	HL79-6		..COLLAR- (V5M902) (SPEC BACC30M6) (OPT HL79-6 (V73197)) (OPT HL79-6 (V92215)) (OPT 66014-6 (V56878)) (OPT HL79-6 (V56878)) (USED ON ITEMS 145, 147)	A,B,N ,P	4

57-26-12

ILLUSTRATED PARTS LIST

01.1

Page 1033

Jul 01/04

FIG. & ITEM	PART NO.	AIRLINE PART NUMBER	NOMENCLATURE 1234567	EFF CODE	QTY PER ASSY
01-256B	HL1187-6		..COLLAR- (V5M902) (SPEC BACC30X6) (OPT HL87-6 (V73197)) (OPT HL87-6 (V92215)) (OPT HL1187-6 (V56878)) (OPT HL1187-6 (V92215)) (OPT HL87-6 (V56878)) (OPT HL1187-6 (V73197)) (USED ON ITEMS 145B, 147A)	A,B,N ,P	4
258	HL1052PB6-18		..BOLT- (V97928) (SPEC BACB30MC6-18) (OPT HL64-6-18 (V56878)) (OPT HL64-6-18 (V60516)) (OPT HL64-6-18 (V73197)) (OPT HL64-6-18 (V80539)) (OPT HL64-6-18 (V06950)) (OPT HL64-6-18 (V97928)) (OPT L806X6-18 (V06725)) (OPT HL64-6-18 (V9N513)) (OPT HL64-6-18 (V06725)) (USED ON ITEMS 145B, 147A)	A,B,N ,P	1

57-26-12

ILLUSTRATED PARTS LIST

01.1

Page 1034

Jul 01/04


BOEING
 COMPONENT
 MAINTENANCE MANUAL

FIG. & ITEM	PART NO.	AIRLINE PART NUMBER	NOMENCLATURE 1234567	EFF CODE	QTY PER ASSY
01-259	HL1187-6		..COLLAR- (V5M902) (SPEC BACC30X6) (OPT HL87-6 (V73197)) (OPT HL87-6 (V92215)) (OPT HL1187-6 (V56878)) (OPT HL1187-6 (V92215)) (OPT HL87-6 (V56878)) (OPT HL1187-6 (V73197)) (USED ON ITEMS 145B, 147A)	A,B,N ,P	1
260	113T1772-11		DELETED		
-260A	113T1772-12		DELETED		
261	015T0198-7		..GUSSET- (USED ON ITEM 145B)	A,B	1
-261A	015T0198-8		DELETED		
R -261J	015T0198-8		..GUSSET- (USED ON ITEM 147A)	N,P	1
262	HL448UC6-2		..BOLT- (V56878) (SPEC BACB30MB6A2) (OPT HL448UC6-2 (V73197)) (OPT HL448UC6-2 (V92215)) (OPT HL448UC6-2 (V97928)) (OPT 69308-6A2 (V56878)) (OPT HL448UC6-2 (V80539)) (OPT HL448UC6-2 (V08524)) (OPT HL448UC6-2 (V9N513)) (OPT WC4486-2 (V60516)) (USED ON ITEMS 145B, 147A)	A,B,N ,P	14

57-26-12

ILLUSTRATED PARTS LIST

01.1

Page 1035

Jul 01/04

FIG. & ITEM	PART NO.	AIRLINE PART NUMBER	NOMENCLATURE 1234567	EFF CODE	QTY PER ASSY
01-263	HL1187-6		..COLLAR- (V5M902) (SPEC BACC30X6) (OPT HL87-6 (V73197)) (OPT HL87-6 (V92215)) (OPT HL1187-6 (V56878)) (OPT HL1187-6 (V92215)) (OPT HL87-6 (V56878)) (OPT HL1187-6 (V73197)) (USED ON ITEMS 145B, 147A)	A,B,N ,P	14
264	015T0198-5		..GUSSET- (USED ON ITEMS 145B, 147A)	A,B,N ,P	1
267	113T1772-11		..FRAME	A,B, E-G	1
-267A	113T1772-12		DELETED		
R -268	113T1772-12		..FRAME	N,P, S-U	1
270	113T1772-13		..FRAME	A,B, E-G	1
-270A	113T1772-14		DELETED		
R -272	113T1772-14		..FRAME	N,P, S-U	1
275	113T1772-15		..CLIP	A,B, E-G,N ,P, S-U	1

57-26-12

ILLUSTRATED PARTS LIST

01.1

Page 1036

Jul 01/04


BOEING
 COMPONENT
 MAINTENANCE MANUAL

FIG. & ITEM	PART NO.	AIRLINE PART NUMBER	NOMENCLATURE 1234567	EFF CODE	QTY PER ASSY
01- 277	113T1779-1		.. DOUBLER-CORNER	A,B, E-G	1
-277A	113T1779-2		DELETED		
R -277J	113T1779-2		.. DOUBLER-CORNER	N,P, S-U	1
278	BACS4OR08C08F		.. SHIM	A,B, E-G,N ,P, S-U	1
279	BACS4OR08C31F		.. SHIM	A,B, E-G,N ,P, S-U	1
280	113T1770-9		. SEAL-BULB (MFD FROM EXTR RUBBER F25.01 10-60754-265 12.00 IN)	A-K,X	1
-280A	113T1770-10		DELETED		
R -282	113T1770-10		. SEAL-BULB (MFD FROM EXTR RUBBER F25.01 10-60754-265 12.00 IN)	L,N-W ,Y	1
285	HL11VAZ3-3		DELETED		
285A	BACB30NN3K3		DELETED		
285B	BACB30NM3K3		. BOLT		5
287	AN960-10L		. WASHER	A-L, N-W	5
R -287A	NAS1149E0332P		. WASHER	X,Y	5
290	BACR15BA3AD		. RIVET- (SIZE DETERMINE ON INST)		10
295	NS103194-02-2		. NUTPLATE- (V80539) (SPEC BACN10KE3E2) (OPT F51752-3-2 (V15653)) (OPT RMF9216-2-3 (V72962)) (OPT BRFR120A3-2 (V52828))		4

57-26-12

ILLUSTRATED PARTS LIST

01.1

Page 1037

Jul 01/04

FIG. & ITEM	PART NO.	AIRLINE PART NUMBER	NOMENCLATURE 1234567	EFF CODE	QTY PER ASSY
01-300	NS103191-02-2		.NUTPLATE- (V80539) (SPEC BACN10KE3B2) (OPT F51750-3-2 (V15653)) (OPT RMF9213-2-3 (V72962)) (OPT BRFR220A3-2 (V52825))		1
305	113T1770-5		.RETAINER-SEAL	A-K,X	1
-305A	113T1770-6		DELETED		
R -307	113T1770-6		.RETAINER-SEAL	L,N-W ,Y	1
310	113T1770-7		.RETAINER-SEAL	A-K,X	1
-310A	113T1770-8		DELETED		
R -312	113T1770-8		.RETAINER-SEAL	L,N-W ,Y	1
315	NAS1399D6A6		.RIVET- (SIZE DETERMINE ON INST)		8
320	113T1770-11		.SUPPORT-SEAL RTNR		1
325	113T1770-12		.SUPPORT-SEAL RTNR		1
330	BACB30NN3K5		.BOLT		2
335	AN960-10		.WASHER	A-L, N-W	2
R -335A	NAS1149E0363P		.WASHER	X,Y	2
340	H10-3BAC		.NUT- (V15653) (SPEC BACN10JC3) (OPT NS202101-02 (V80539)) (OPT RMLH9075-3W (V72962)) (OPT T6S1032J (V71087)) (OPT VN303A02 (V92215)) (OPT 96-02 (V80539)) (OPT BRH10A3 (V52828))	A-L, N-W	2

57-26-12

ILLUSTRATED PARTS LIST

01.1

Page 1038

Jul 01/04


BOEING
 COMPONENT
 MAINTENANCE MANUAL

FIG. & ITEM	PART NO.	AIRLINE PART NUMBER	NOMENCLATURE 1234567	EFF CODE	QTY PER ASSY
R 01- -340A	BRFR220A3-2		.NUTPLATE- (V52828) (SPEC BACN10KE3B2) (OPT RMF9213-2-3 (V72962)) (OPT F51750-3-2 (V15653)) (OPT NS103191-02-2 (V80539))	X,Y	2
345	113T1774-9		.FRAME ASSY-AFT (OPT ITEM 347)	A-K	1
-345A	113T1774-10		DELETED		
R -346	113T1774-10		.FRAME ASSY-AFT (OPT ITEM 348)	L,N-W	1
347	113T1774-17		.FRAME ASSY-AFT (OPT ITEM 345)	A-K	1
-347A	113T1774-18		DELETED		
R -347B	113T1774-17		.FRAME ASSY-AFT	X	1
R -348	113T1774-18		.FRAME ASSY-AFT (OPT ITEM 346)	L,N-W	1
R -348A	113T1774-18		.FRAME ASSY-AFT ATTACHING PARTS	Y	1
350	NAS1399MW6-6		.RIVET		2
353	NAS1399CW6		DELETED		
355	BACR15BA6AD		.RIVET- (SIZE DETERMINE ON INST) -----*-----		15
R 360	012T2400-12		..BUSHING		1
365	BACB28AM09B029A		..BUSHING		1

57-26-12

ILLUSTRATED PARTS LIST

01.1

Page 1039

Jul 01/04

FIG. & ITEM	PART NO.	AIRLINE PART NUMBER	NOMENCLATURE 1234567	EFF CODE	QTY PER ASSY
01-370	113T1774-11		..FRAME-MACHINING (USED ON ITEM 345)	A-K	1
R -370A	113T1774-12		DELETED		
R -371	113T1774-12		..FRAME-MACHINING (USED ON ITEM 346)	L,N-W	1
372	113T1774-19		..FRAME-MACHINING (USED ON ITEMS 347, 347B)	A-K,X	1
R -372A	113T1774-20		DELETED		
R -373	113T1774-20		..FRAME-MACHINING (USED ON ITEMS 348, 348A)	L,N-W ,Y	1
375	BACB30NN3K3		.BOLT	A-L, N-W	18
R -375A	BACB30NN3K4		.BOLT	X,Y	18
380	BACR15BA3AD		.RIVET- (SIZE DETERMINE ON INST)		36
385	NS103191-02-2		.NUTPLATE- (V80539) (SPEC BACN10KE3B2) (OPT F51750-3-2 (V15653)) (OPT RMF9213-2-3 (V72962)) (OPT BRFR220A3-2 (V52825))		18
390	113T1771-3		.BONDED ASSY-UPR	A,B,E ,F	1
R -390A	113T1771-4		DELETED		
R -390B	113T1771-23		.BONDED ASSY-UPR	C,D, G-K	1
R -390C	113T1771-37		.BONDED ASSY-UPR	X	1

57-26-12

 ILLUSTRATED PARTS LIST
 01.1 Page 1040
 Jul 01/04


BOEING
 COMPONENT
 MAINTENANCE MANUAL

FIG. & ITEM	PART NO.	AIRLINE PART NUMBER	NOMENCLATURE 1234567	EFF CODE	QTY PER ASSY
R 01-395	113T1771-4		. BONDED ASSY-UPR	N, P, S, T	1
R -395A	113T1771-24		. BONDED ASSY-UPR	L, Q, R, U, V, W	1
R -395B	113T1771-38		. BONDED ASSY-UPR	Y	1
-400	113T1771-23		DELETED		
-400A	113T1771-24		DELETED		
405	113T1771-15		. BONDED ASSY-LWR	A, B, E, F	1
-405A	113T1771-16		DELETED		
R -405B	113T1771-19		. BONDED ASSY-LWR	C, D, G-K	1
R -405C	113T1771-29		. BONDED ASSY-LWR	X	1
R -407	113T1771-16		. BONDED ASSY-LWR	N, P, S, T	1
R -407A	113T1771-20		. BONDED ASSY-LWR	L, Q, R, U, V, W	1
R -407B	113T1771-30		. BONDED ASSY-LWR	Y	1
-410	113T1771-19		DELETED		
-410A	113T1771-20		DELETED		
415	BACR15BA3AD		.. RIVET- (SIZE DETERMINE ON INST)		32
420	NS103191-02-2		.. NUTPLATE- (V80539) (SPEC BACN10KE3B2) (OPT F51750-3-2 (V15653)) (OPT RMF9213-2-3 (V72962)) (OPT BRFR220A3-2 (V52825))		16
425	113T1771-10		.. STRAP-ELEC BONDING		2
430	113T1771-22		DELETED		
R 435	113T1771-21		.. BONDED ASSY-AFT LWR	A, B, E, F, N, P, S, T	1
R -435A	113T1771-31		.. BONDED ASSY-AFT LWR	X	1
R -440	113T1771-22		.. BONDED ASSY-AFT LWR	C, D, G-K	1
R -440A	113T1771-32		.. BONDED ASSY-AFT LWR	Y	1

- Item Not Illustrated

57-26-12

ILLUSTRATED PARTS LIST

01.1

Page 1041

Jul 01/04